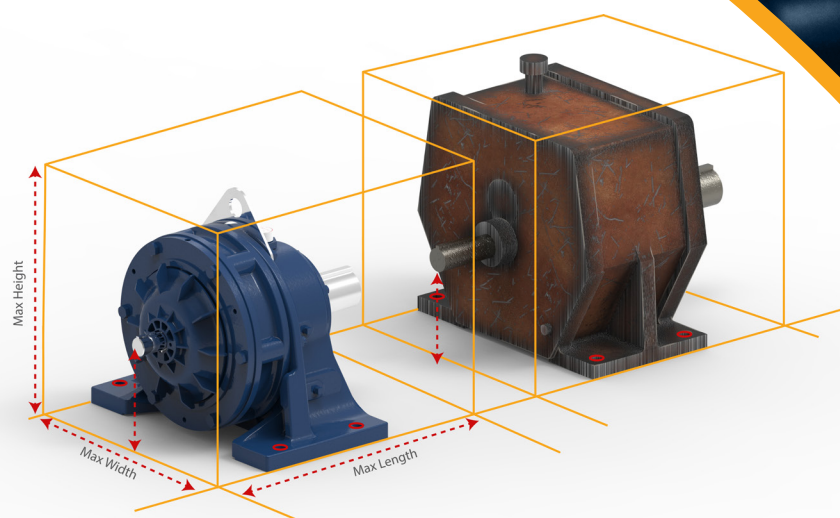


# REPLACING IS EASY AS 1...2...3!

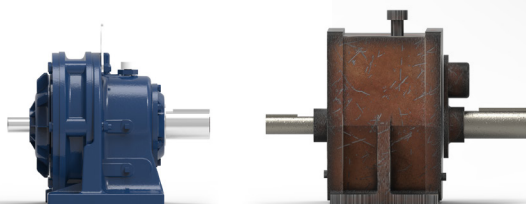
## Cyclo<sup>®</sup> Retrofits

Improve reliability and efficiency by replacing that old large gearbox with a compact power dense Cyclo<sup>®</sup>. Unlike geared designs, the Cyclo<sup>®</sup>'s reduction components operate in compression rather than shear, which results in exceptionally rugged and shock resistant performance.

**Cyclo<sup>®</sup> Retrofits** are an excellent choice to replace an obsolete or troublesome gearbox. They offer greater availability in a current, state-of-the-art gearbox with the benefits of minimal on-site modifications. We will select the proper Cyclo<sup>®</sup> and design the retrofit to meet your specifications.



Maximum width, height, and length define the available space to mount the Cyclo<sup>®</sup> and retrofit base without interference.



*Contact your Sumitomo Representative to find the best Retrofit Solution for you.*

1. Locate your representative at [us.sumitomodrive.com/representative](http://us.sumitomodrive.com/representative)
2. Send an email with your contact information and photos of your application with reducer and motor nameplates.
3. We'll handle the rest and get the process started.

# WE CAN REPLACE YOUR UNIT!

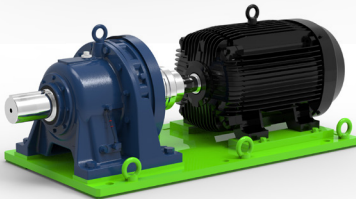
## Retrofit Options

The output shaft center line to base height, available mounting envelope, and motor mounting preference will determine which option is right for your application. These custom bases will position the Cyclo® low-speed shaft to be in the **EXACT** same position as the original low-speed shaft. Provisions for final field alignment are designed in.



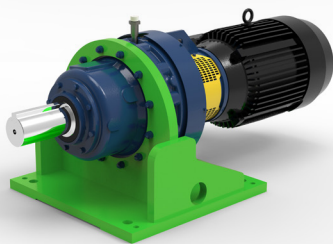
### Transition Plate

*The Transition Plate is used where the shaft center line to base distance allows for a plate thick enough to mount the "H-Frame" Horizontal Cyclo® and bolt to the existing unit's bolt hole locations. The motor mounting is left to be adjusted in the field or by other motor mounting options such as a C-face adapter, Shovel base, or Top mount belt drive.*



### Baseplate

*The Baseplate is similar to the Transition Plate but includes support and mounting provisions for a foot-mounted motor.*



### Steel Foot

*The Steel foot design is used where there is insufficient space between the shaft center line and Base for the thickness of a transition plate. The Steel Foot is a "F-Frame" flange style Cyclo® in a custom fabricated mount to match the shaft center lines*

The most cost-effective method may be modifying or replacing couplings to match the standard Cyclo® input or output shaft sizes. Custom input and output shafts are available when required.