

Sumitomo Drive Technologies

A global power transmission solutions provider. With facilities strategically located throughout the world, providing comprehensive products and services in your region.

Headquarters



4200 Holland Blvd
Chesapeake, VA 23323

email: SMA.CustomerService@shi-g.com
phone: 757-485-3355

Poultry Industry



Why choose Sumitomo Drive Technologies for Poultry applications?

We offer the toughest drives available to meet the harshest demands.

We Know Poultry

Governing sanitation bodies such as USDA, FDA, NSF, and 3-A recommend higher levels of bacteria control and increased sanitation measures in food and beverage handling environments. With this sanitation focus, there is an industry-wide initiative to increase the chemical concentration, water temperature, and frequency that facilities are cleaning their equipment.

Given this more significant focus, it is critical that all equipment utilized within a poultry facility be capable of withstanding repeated exposure without external degradation or compromise in performance. Recognizing this, Sumitomo Drive Technologies has introduced Fortress[®] as well as the SHIELD360[®] family of protection packages. From general-purpose solutions to those geared to harsh, high-pressure washdown environments, Sumitomo has a response that will meet your most stringent demands.

Ultra SHIELD360[®]

In order to resist high water pressure, humidity, acidity, and caustic environments, Sumitomo Drive Technologies developed the UltraSHIELD360[®] package—a tri-layer coating system.



Quality Food Grade Components

We offer top of the line food grade components to accompany our speed reducers.

Cassette Seals

- Antimicrobial FKM material
- Spinning expels contaminants
- Self-contained and self-sealing



Ⓞ CYCLO[®] Overhead Drive

Unsurpassed by any other drive available in the market today.

- Torque dense, compact construction
- Dimensionally interchangeable with DVX drive
- C-face motor adapters accommodate washdown and stainless steel motors



F FORTRESS[®]

- 93% Gear Efficiency
- Stainless Steel
- Compact Modular Housing



H HYPONIC[®]

- 85% Efficiency
- Maintenance-Free
- Large Ratio Range
- Easy Grip™ Shaft Locking Device



BH BBB-H

- Low Reduction Ratios
- Compact Design
- Easy Grip™ Shaft Locking Device



Ⓞ CYCLO[®] 6000

- Cycloidal Technology
- Reliable Performance
- Maintenance-Free



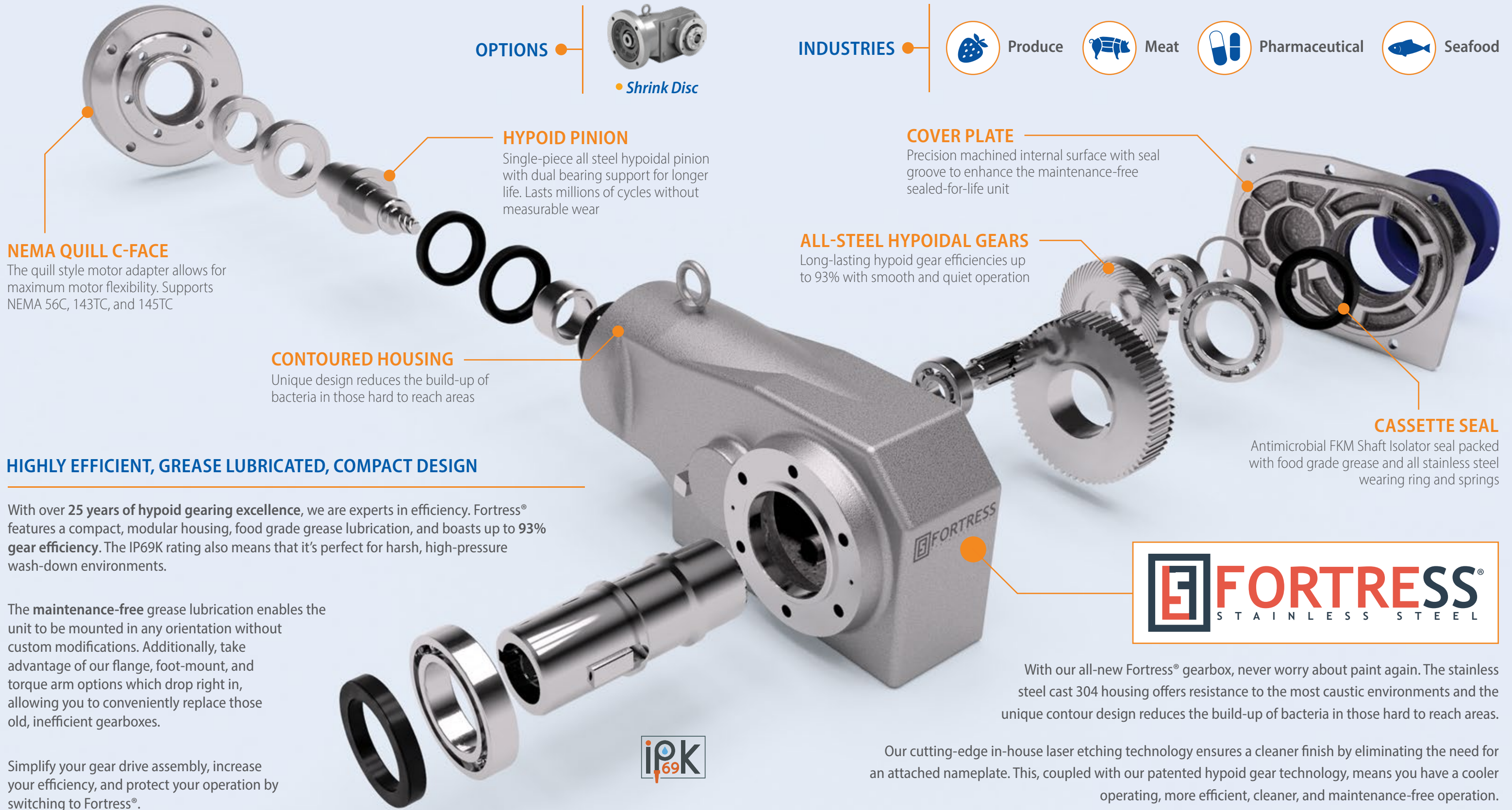
B4 CYCLO[®] BBB 4

- Taper-Grip[®] Bushing
- Compact Design
- Multiple Output Styles



INVERTERS E3 & P2

- Integral Brake Transistor
- Remote Programming
- User-Friendly Interface



OPTIONS



INDUSTRIES



Produce



Meat



Pharmaceutical



Seafood

NEMA QUILL C-FACE

The quill style motor adapter allows for maximum motor flexibility. Supports NEMA 56C, 143TC, and 145TC

HYPOID PINION

Single-piece all steel hypoidal pinion with dual bearing support for longer life. Lasts millions of cycles without measurable wear

COVER PLATE

Precision machined internal surface with seal groove to enhance the maintenance-free sealed-for-life unit

ALL-STEEL HYPOIDAL GEARS

Long-lasting hypoid gear efficiencies up to 93% with smooth and quiet operation

CONTOURED HOUSING

Unique design reduces the build-up of bacteria in those hard to reach areas

CASSETTE SEAL

Antimicrobial FKM Shaft Isolator seal packed with food grade grease and all stainless steel wearing ring and springs

HIGHLY EFFICIENT, GREASE LUBRICATED, COMPACT DESIGN

With over 25 years of hypoid gearing excellence, we are experts in efficiency. Fortress® features a compact, modular housing, food grade grease lubrication, and boasts up to 93% gear efficiency. The IP69K rating also means that it's perfect for harsh, high-pressure wash-down environments.

The maintenance-free grease lubrication enables the unit to be mounted in any orientation without custom modifications. Additionally, take advantage of our flange, foot-mount, and torque arm options which drop right in, allowing you to conveniently replace those old, inefficient gearboxes.

Simplify your gear drive assembly, increase your efficiency, and protect your operation by switching to Fortress®.



With our all-new Fortress® gearbox, never worry about paint again. The stainless steel cast 304 housing offers resistance to the most caustic environments and the unique contour design reduces the build-up of bacteria in those hard to reach areas.

Our cutting-edge in-house laser etching technology ensures a cleaner finish by eliminating the need for an attached nameplate. This, coupled with our patented hypoid gear technology, means you have a cooler operating, more efficient, cleaner, and maintenance-free operation.

SPECS



HP RATING
1/2 HP to 2 HP
(1.72 kW)



DIAMETER
3/4in to 1-7/16in

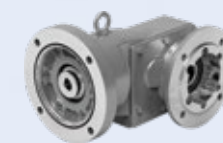


TORQUE
Up to 2,190 lb·in
(247 N·m)

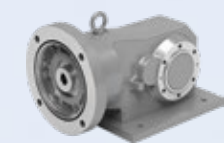


RATIO RANGE
7:1 up to 60:1

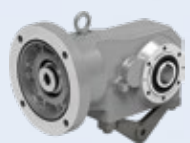
MOUNTING



• Flange Mount



• Foot Mount



• Shaft Mount



Maintaining high levels of sanitation and machine integrity can be challenging.

We provide a complete package to protect your units from caustic environments.

The Challenge: Paint Failure

When it comes to Poultry Processing, hygiene levels have to be at their highest. Inspectors have become more critical and can shut down lines until the offending equipment is brought up to standard. The equipment must be able to withstand chemical washdown at high-pressure levels and keep bacteria and rust at a minimum.

Equipment Problems:

- Paint chips due to caustic environment
- Compromised integrity leads to downtime
- Vulnerability to other environmental elements
- Sub-standard lubrication
- Water exposure during washdowns
- Non-food grade motor options

The Solution: UltraSHIELD360[®] and Fortress[®]

Sumitomo manufactures a complete line of gearmotors and gearboxes with Ultrashield 360[®] option for your challenging applications. Our Fortress[®] Stainless Steel units can remove the paint issues from the equation and provide long-term benefits in corrosion and reliability.

Sumitomo Problem Solvers:

- Resistance to cleaning and sanitation compounds
- Longer product life and less unscheduled downtime
- Complete protection from dust, dirt, oils, and non-corrosives
- NSF H1 food-grade lubricant, FDA 21 CFR compliant
- Food-grade sealing solutions
- All stainless-steel, totally enclosed motor



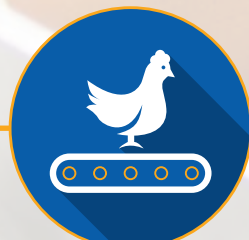
Hatchery



C H

Waste Conveyor

Receiving



C H B4 O

Supply Conveyor
Overhead Conveyor

Slaughter



C B4 O

Picking Conveyor
Overhead Conveyor

Scalding



O

Overhead Conveyor

Defeathering



C H B4 O

Defeathering
Overhead Conveyor

Evisceration



C O

Evisceration Line
Overhead Conveyor

By-Product Recovery



C H B4 HB PX

Grinder
Conveyor

We meet the challenges that the poultry industry faces every day.

Sumitomo has the reliable solutions to meet any demand.

The Challenge: Inefficiency

Poultry consumption continues to rise, driving up the overall industry demand. Facilities are noticing more stress on their processes and machinery. With this increased demand, facility downtime would prove to be costly and harmful to employees and consumers. Your power transmission drives must deliver the highest level of reliability at the lowest possible life-cycle cost.

Inefficient / Outdated Equipment Problems:

- Low efficiency
- Oil leakage
- Difficult to obtain parts / spare units
- Frequent breakdowns
- Frequent maintenance and repairs
- Complex power trains

The Solution: Sanitation

We manufacture a comprehensive lineup of speed reducers and gearmotors specifically designed to meet the needs of service in the poultry industry. With over 50 years of experience, Sumitomo Drive Technologies can provide highly efficient, dependable solutions for the most challenging applications. We have products suited for your industry's needs to deliver high-quality poultry to consumers using our expertise.

Sumitomo Problem Solvers:

- High efficiency
- Optional grease lubrication
- Optional food-grade lubricants
- Compact, space saving designs
- Minimized facility downtime
- Drop-in replacement capabilities



Washing



O

Overhead Conveyor

Chilling



F H BH

Freezers
Conveyor

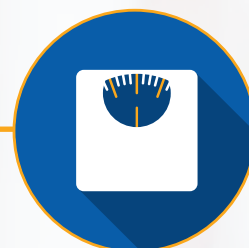
Cut-Up & Deboning



F H BH

Cutting Line
Deboning Line

Weighing



F H BH

Conveyor

Further Processing



C H B4

Conveyor
Overhead Conveyor

Packaging



C H B4 MC

Palletizer
Conveyor
Industrial Robot
Shrink Wrapping
Packaging Equipment

Support



C H B4 PX MC

Pumps
Overhead Doors
Wastewater Treatment

Our factory capabilities support all of your gearbox needs.

The most reliable and highest quality products backed by a 400 year heritage.

Why Sumitomo?

Our 400 Year Heritage

The history of the Sumitomo Group started more than 400 years ago when Masatomo Sumitomo opened a book and pharmacy store in the city of Kyoto, Japan. Today, the Sumitomo Group consists of more than 20 companies who share the Sumitomo Emblem as well as many common values and ideals.

Devoted to Quality

In addition to one of the most comprehensive product lines of any power transmission company, we offer the most reliable and highest quality products available in the industry. Whether it's product development or manufacturing processes, our Quality culture resonates through our entire global network.

Committed to our Employees and the Community

We recognize our employees are our most valuable asset. They are the driving force behind our innovative products, our ability to support our customers, and our commitment to continuous process improvement. We strive to be a valuable member of society and take pride in the contributions we make to our communities across North and South America.

Dedicated to Innovative Manufacturing

With more than a century of expertise in manufacturing, our global capabilities are unmatched in the industry. We have manufacturing and assembly facilities on every continent and continue to make investments in our manufacturing technologies to maintain our position as a leader in innovation.

Centers of Excellence

Our Centers of Excellence offer customers a nationwide support network. From inventory distribution to manufacturing to assembly, we have the team to ensure high quality, responsiveness, on-time delivery, and quick lead times.



Chesapeake, VA

Manufacturing, Support, Inventory, and Training

Our Western Hemisphere headquarters has 360,000 sq ft of manufacturing space, and cutting-edge technology. Centralized inventory distribution with a Foreign trade zone (FTZ), focused on inventory optimization, motor assembly, and hands-on training at our Power Institute.



Verona, VA

Industrial Gearbox Production

This purpose-built facility is specifically designed to handle the assembly of our large industrial gearboxes.



Lufkin, TX

Manufacturing and Services

This 32,000 sq ft facility handles gear manufacturing, gearbox repairs, and reverse engineering.



Glendale Heights, IL

Gearmotor Assembly and Support

Houses our state-of-the-art paint system for our SHIELD360® packages for Cyclo®, BuddyBox®, and Hyponic®.



Corona, CA

Gearmotor Assembly and Support

Our West Coast location offers repairs and supplies gearmotor products to U.S. customers.