



Sumitomo Drive Technologies

### Sumitomo Drive Technologies

Sumitomo Drive Technologies has facilities strategically located throughout the world, providing comprehensive products and services in your region.



- ★ MANUFACTURING HUB
- ASSEMBLY & SERVICE
- ▲ REGIONAL SALES OFFICE

Sumitomo Machinery Corporation of America  
[us.sumitomodrive.com](http://us.sumitomodrive.com)

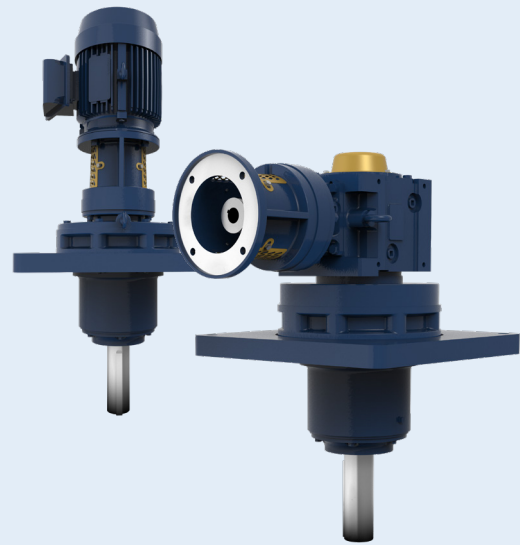
For worldwide locations, please visit [www.sumitomodrive.com/worldwide](http://www.sumitomodrive.com/worldwide)  
 Contact your local representative at [www.sumitomodrive.com/representative](http://www.sumitomodrive.com/representative)  
 Tel: 1-800-SM-CYCLO (762-9256)

### Food & Beverage





# Dependably-Built Low-Maintenance Products For Uninterrupted Operations



## CYCLO® Overhead Drive

Unique GREASE-FILLED cyclo transmission uses no gears and has 500% overload capacity.

- 2x competitors overload capacity
- Dimensionally interchangeable with competitor units on request
- C-Face motor adapter options
- 100% grease-filled results in no leakage & long life

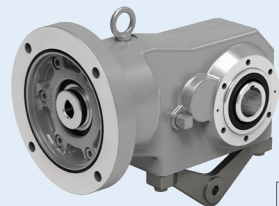
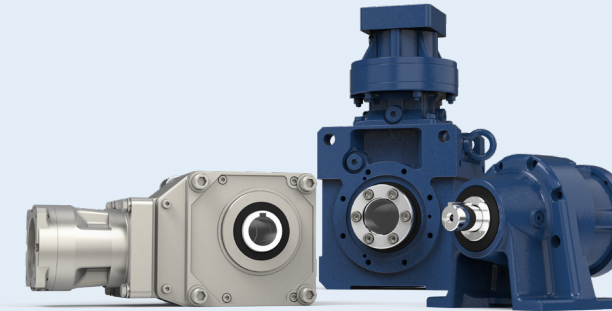
## FREEZER DRIVE

- Unique Cam-driven pump to circulate lubrication at -45 °F
- Start and stop operations at full load, thanks to Cycloidal technology's 500% shockload ability.



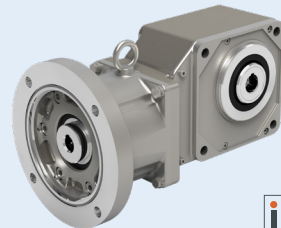
## SERVO GEARBOXES

- Lower cost than planetary gearboxes
- Highest acceleration and emergency stop capacity
- Servo Cyclo®, Servo Bevel BuddyBox® and Servo Hyponic® options



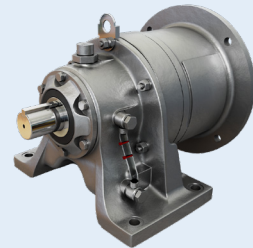
## FORTRESS®

- Up to 2 HP
- 3/4" to 1-7/16" (Hollow & Solid)
- 7:1 up to 60:1
- Grease-filled



## HYPONIC®

- Up to 15 HP
- 3/4" to 2" (Hollow & Solid)
- 5:1 up to 1,440:1
- Grease-filled options



## CYCLO® 6000

- Up to 235 HP
- 1/2" to 7" (Solid Shaft)
- 3:1 up to 658,503:1
- Grease-filled options

## Quality Food Grade Components



## SHIELD360® Protection Packages

Ingress Protection	SHIELD360° Packages
Wash Down IP65	ChemiSHIELD360° *
Food Grade High Pressure Wash Down IP69	UltraSHIELD360° **

\* Stainless shafts upon request

\*\* Quill input required

## Unique Food Grade IP69 Mechanical Seals

- Antimicrobial FKM material
- Self-contained and self-sealing



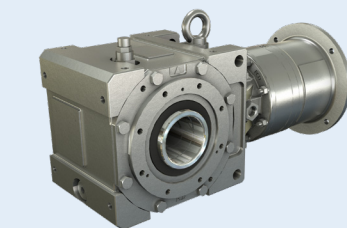
## Optional Stainless Steel Motors

- Totally enclosed stainless steel
- Double-sealed ball bearings



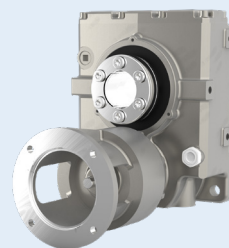
## Cycloidal Gearing

- Highest efficiency of all gear types
- 500% shockload



## CYCLO® BEVEL BUDDYBOX® 4

- Up to 100 HP
- 1" to 4-15/16" (Hollow & Solid)
- 11:1 up to 26,000:1
- Grease-filled options



## CYCLO® HELICAL BUDDYBOX®

- Up to 40 HP
- 1-3/16" to 6-1/2" (Hollow Bore)
- 11:1 up to 26,492:1
- Grease-filled options



## SCREW CONVEYOR DRIVE KIT

- Lip seal with adapter
- Double oil seal in gearbox
- CEMA-Compliant shafts





## Challenge: Inefficient Gearboxes

- Worm gearboxes have a short lifespan and run hot
- Oil accumulated in the drip pan would splash everywhere during routine washdowns
- Limited 1.5 year life max

## Solution: Fortress®

- Efficient Hypoid gearing helps the gearbox run cool
- Maintenance-free synthetic grease eliminates need for oil change
- Cassette-style grease seal keeps leakage at bay for a long lifespan

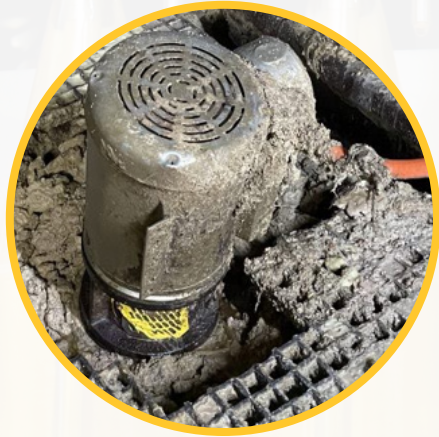


## Challenge: Production Downtime

- Frequent failure of input oil seals causes leakage
- Recurring input bearing failure due to the installed belt
- The unit ran hot often, presenting a burn hazard to personnel

## Solution: Maintenance-Free Hyponic®

- Maintenance-free grease lubrication keeps the unit running efficiently
- Direct drive design eliminates the need for belts and replacements
- Hypoid gears have less friction and are nearly 40 degrees cooler than Worm geared units



## Challenge: Contamination

- Leaking animal by-product contaminate gearboxes
- Constant downtime due to its inability to withstand excessive shockloading
- Constant overheating causing downtime and potential burn hazards

## Solution: Bevel Buddybox® Screw Conveyor

- Sealed, grease-filled gearbox with maintenance-free operation
- Overload capacity is 2x more than competitor units due to Cyclo® technology
- Cycloidal gearing offers higher efficiency and cooler operational temperatures



### Applications

Packaging

Filling Equipment

Process Conveyors

Palletizers

Process Equipment

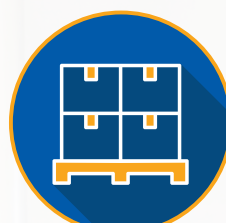
Conveyors

Mixers

Screw Conveyors

Overhead Conveyors

Agitators

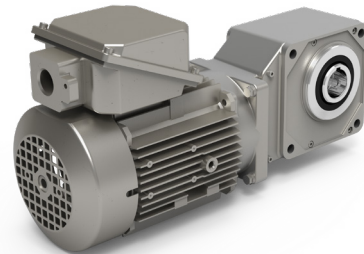
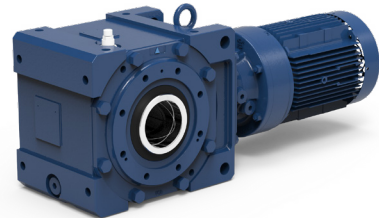




## Integral Gearmotors

EPNA motors offer excellent performance, long operational lifespan and output seals with the ability to withstand common contaminants.

- UL, CSA, DOE Compliant
- Certified NEMA Premium motors
- IP65 Protection Rating



## Condition Monitoring



the **CHECK**  
**ENGINE LIGHT** for  
**SPEED REDUCERS**

*It's all about detecting small issues today before they become costly failures tomorrow.*

## Variable Frequency Drives



- Connection to Rockwell Logix PLC Systems via Ethernet IP
- Rapid commissioning tool with Bluetooth interface
- 200% overload for 4 seconds
- IP66/NEMA 4X-rated enclosures

## Centers of Excellence

Our Centers of Excellence offer customers a nationwide support network. From inventory distribution to manufacturing to assembly, we have the team to ensure high quality, responsiveness, on-time delivery, and quick lead times.



### Chesapeake, VA

#### Manufacturing, Support, Inventory, and Training

Our Western Hemisphere headquarters has 250,000 sq ft of manufacturing space, and cutting-edge technology. Centralized inventory distribution with a Foreign trade zone (FTZ), focused on inventory optimization, motor assembly, and hands-on training at our Power Institute.



### Verona, VA

#### Industrial Gearbox Production

This purpose-built facility is specifically designed to handle the assembly of our large industrial gearboxes.



### Lufkin, TX

#### Manufacturing and Services

This 32,000 sq ft facility handles gear manufacturing, gearbox repairs, and reverse engineering.



### Glendale Heights, IL

#### Gearmotor Assembly and Support

Houses our state-of-the-art paint system for our SHIELD360® packages for Cyclo®, BuddyBox®, and Hyponic®.

