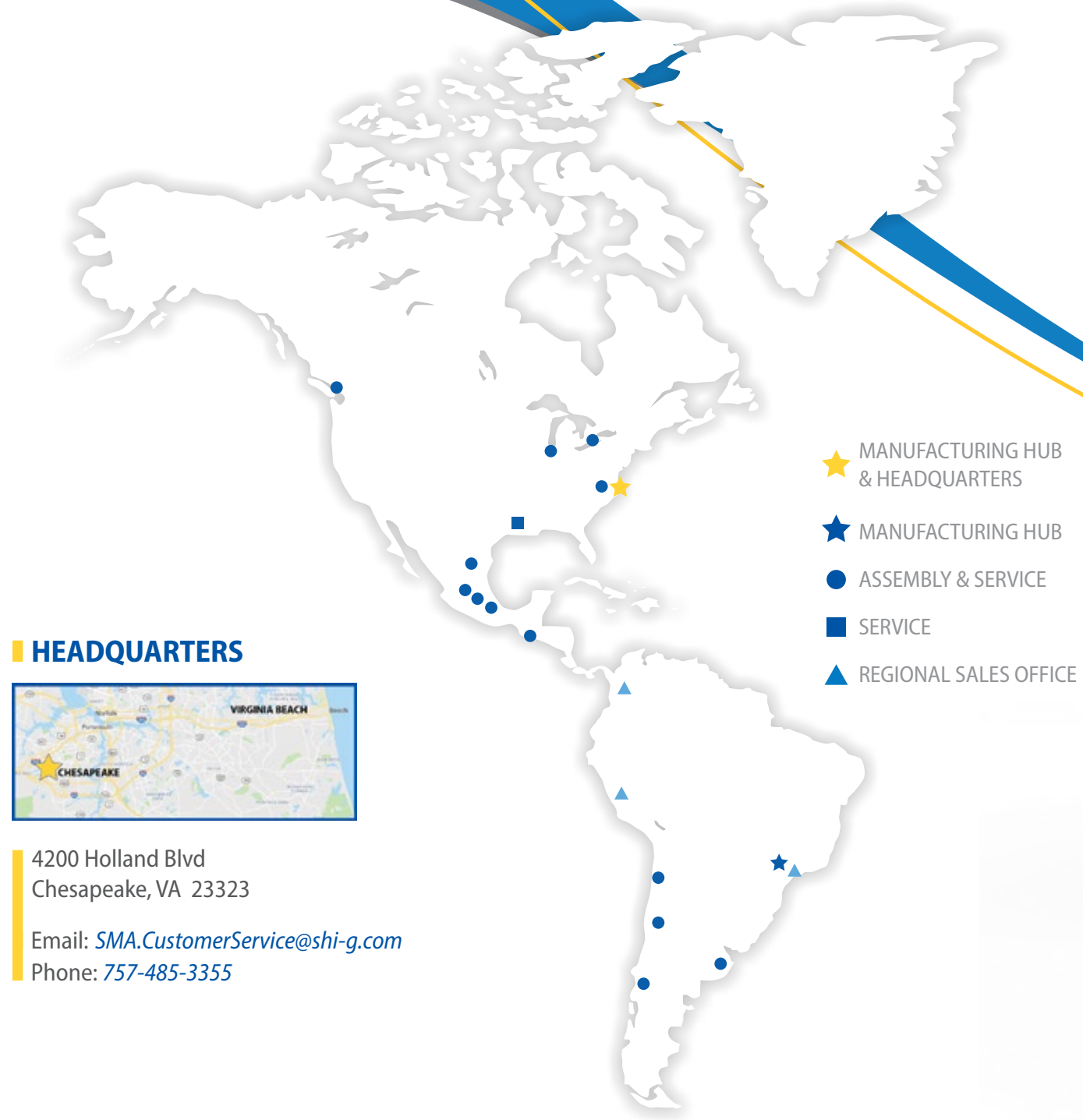


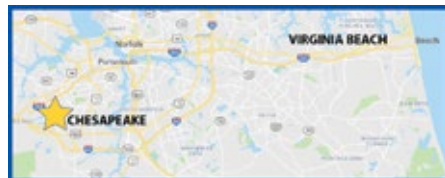
# Sumitomo Drive Technologies

A global power transmission solutions provider, with facilities strategically located throughout the world, providing comprehensive products and services in your region.

# Sumitomo Drive Technologies



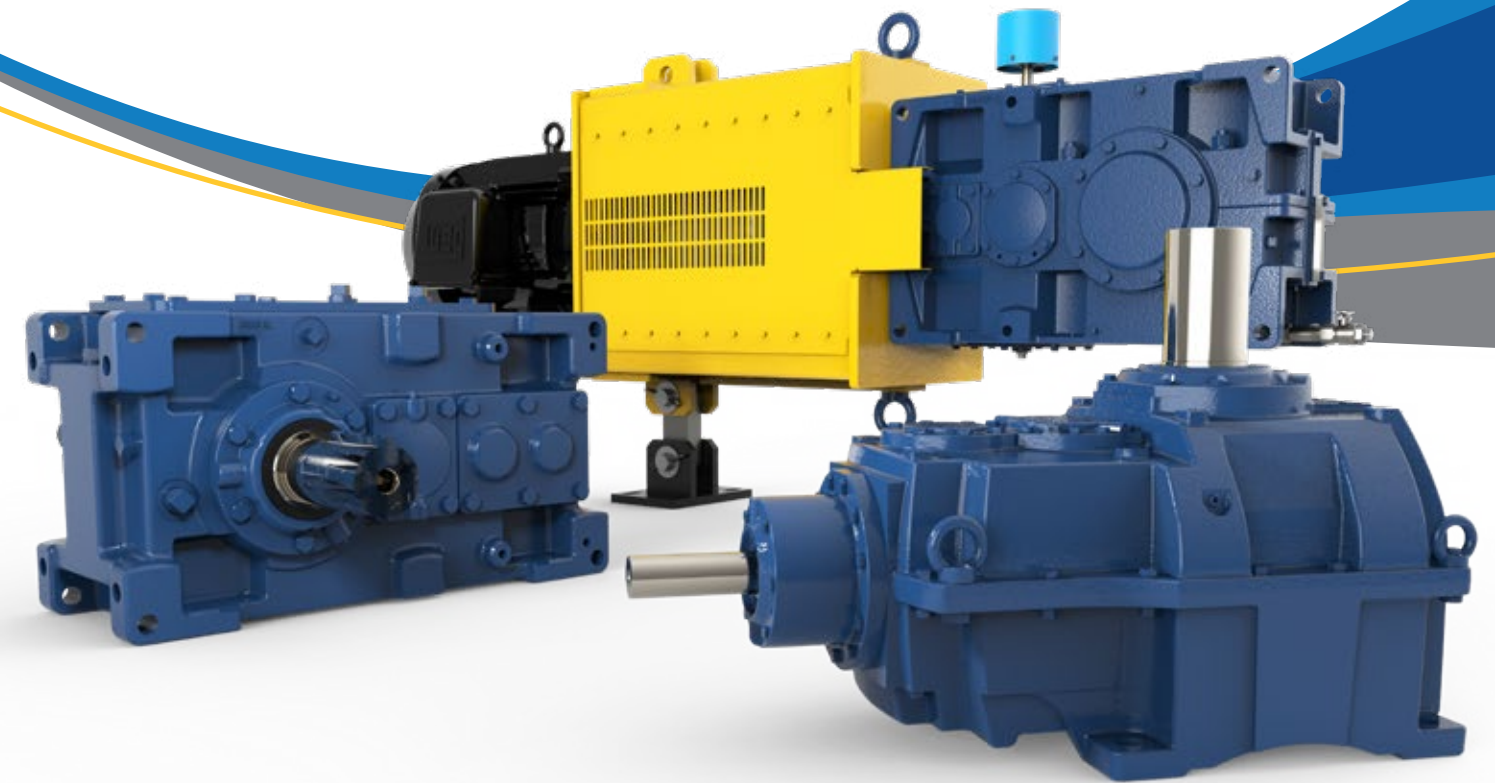
## HEADQUARTERS



4200 Holland Blvd  
Chesapeake, VA 23323

Email: [SMA.CustomerService@shi-g.com](mailto:SMA.CustomerService@shi-g.com)

Phone: 757-485-3355



# Investing in technical training improves safety, efficiency, and retention.

# Two days of practical hands-on learning with live demonstrations.

## WHAT IS G.E.A.R. SCHOOL?

G.E.A.R. School is a **focused technical training program** developed by Sumitomo Drive Technologies in response to a common concern from our customers: the lack of hands-on gearbox knowledge among the teams responsible for their operation, maintenance, and reliability.

### CURRICULUM AND GOAL

The **curriculum** was designed specifically to close that gap. Over two days, attendees will receive a **practical overview of gearboxes**—from design principles to failure analysis and repair.

The **goal** is simple: **help your team communicate** more effectively, troubleshoot issues with confidence, and avoid preventable failures that lead to costly downtime.



## WHY IT MATTERS



### Enhances Performance

Investing in technical training improves safety, efficiency, and retention. 84% of organizations emphasize job-related training because it directly **enhances daily performance**.



### Builds Confidence

Building this knowledge changes how people work. They stop guessing, start catching issues sooner, and **feel more confident** taking the lead when something looks off.



### Provides Fresh Insights

Effective technical instruction encourages cross-functional collaboration and confidence, often leading to **fresh insights** from teams that understand both operations and maintenance.



### Reduces Downtime

Predictive maintenance, which is one of our key course topics, is used by 30–40% of plants and contributes to **cutting unplanned downtime** by up to 50%.

## WHAT YOU'LL LEARN

The two-day course includes classroom instruction as well as **hands-on learning** with a dedicated demo gearbox, allowing participants to see live demonstrations.

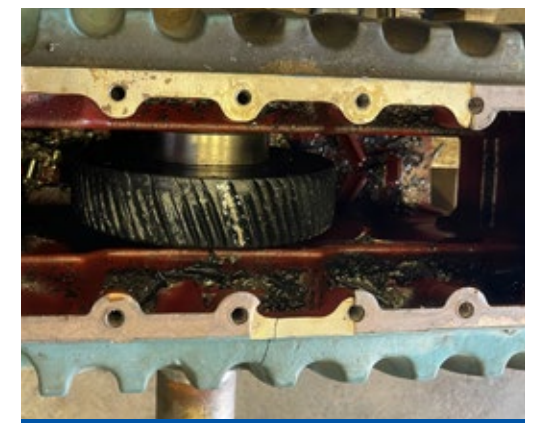
### DAY ONE

- How to **communicate** clearly with suppliers and support teams
- Gear **terminology** and rating basics
- What gear **failure** modes look like and how to read them
- Understanding **bearing** and **seal** designs
- Lubrication selection, application, and **risks**



### DAY TWO

- Common gearbox **repair** options
- How to **inspect** units in the field and write effective reports
- Storage, startup, and **operational** practices
- How to improve **performance** with available enhancements
- Demo of a gearbox **assembly**



*Flexible training options to benefit professionals on any level.*

*Learn from an engineer with over 32 years of experience in power transmission.*

## WHO SHOULD ATTEND?

This course is a strong fit for professionals who deal with gearboxes on **any level**:

- Rotating equipment **operators**
- Reliability **engineers**
- Maintenance **leads**
- Millwrights and field service **technicians**
- Mechanical engineers and **designers**
- Project engineers or **managers**

You **don't need to be a specialist** to benefit—**anyone** who needs to understand what's happening inside the gearbox and how to keep it running longer will gain valuable insight.



## PRICING AND FORMAT

We offer **flexible** training formats depending on your needs and location:

### AT YOUR FACILITY\*

Within a 400-mile radius of Lufkin, TX

- **\$5,000** flat rate for up to 12 attendees

### AT OUR FACILITY

Choice of 3 locations (continental U.S.)

- **\$1,250** per attendee
- Maximum class size: 12

### AT YOUR FACILITY\*

Outside a 400-mile radius (continental U.S.)

- **\$7,500** flat rate for up to 12 attendees

### CUSTOM OPTIONS AVAILABLE

Let us build a course for you

We can build a version of the course **tailored** to your plant or team. Just send in your request and we'll work with you on a quote.

## CERTIFICATION

- Each attendee will receive **13 hours** of professional instruction and a **Certificate of Completion**.

*\*The following lifting equipment is needed for the demo gearbox unit:*

- Complete unit – **1,600 lbs**
- Gearbox cover – **300 lbs**
- Input nose assembly – **350 lbs**

## ABOUT THE INSTRUCTOR



### SCOTT FRANKS, PE

Director of Engineering – International Aftermarket, Americas  
Sumitomo Drive Technologies

## EXPERIENCE

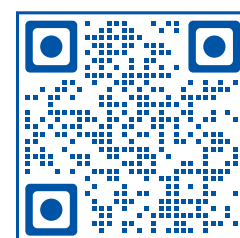
Scott Franks is a **licensed Professional Engineer** with more than **32 years** of experience in power transmission, including over two decades focused specifically on aftermarket services. He holds an engineering degree from Texas A&M University and an MBA from Stephen F. Austin University.

## CAREER

Throughout his career, Scott **has worked across key areas** such as low-speed special designs, high-speed rotor dynamics, field service, and repair operations. In 2015, he founded LUFTEX Gears, where he served as VP of Operations and Engineering before the company was acquired by Sumitomo Drive Technologies in 2020.

Today, Scott leads as the **Director of Engineering** - International Aftermarket for the Americas, supporting customers across a wide range of industries with expert guidance and practical solutions.

## GET STARTED



To schedule training or request a custom proposal, **contact us** today.

Email: [SMA.gearschool@shi-g.com](mailto:SMA.gearschool@shi-g.com)

Phone: 936-632-3679

# Our factory capabilities support all of your gearbox needs.



## AFTERMARKET

Our personnel are the **industry's most versed gearbox problem solvers**. We provide both standard and tailored services, for **maximum** gearbox life.

## REPAIRS

Scheduled & Emergency Repair

Repair services for **all** your related gearbox needs and **24-72 hour turnaround** to the **original** factory specifications.

**Extended warranty programs are available upon request.**

## ROOT CAUSE INVESTIGATION

Product Support

Apply a **wide range** of approaches, tools and techniques to uncover the **causes** of your problems.

## ON-SITE INSPECTIONS & MAINTENANCE

For Your Convenience

Most of the **services** offered and customized **training** can be performed **on location**.

## EXPERTS IN SERVICE

Global Support, Local Service

With a **vast network** of engineers and gearing experts, there's **no challenge** we can't tackle.

Our **Luftex facility**, a core part of our operation, brings **unmatched capabilities** and deep **expertise** in **custom** gearbox repair and service. Equipped with state-of-the-art technology, we're built to handle even the **largest** and most **complex** gearboxes.

**Sumitomo Drive Technologies**

**LUFTEX**

From custom gear manufacturing to on-site gearbox repair, count on the team at our **Luftex facility** to keep your operation **running smoothly**.



## CENTERS OF EXCELLENCE

Our Centers of Excellence offer customers a **nationwide support network**. From **inventory distribution** to **manufacturing** to **assembly**, we have the team to ensure **high quality, responsiveness, on-time delivery, and quick lead times**.



### CHESAPEAKE, VA

**Manufacturing, Support, Inventory, and Training**

Our Western Hemisphere **headquarters** has **360,000 sq ft of manufacturing space**, and cutting-edge technology. Centralized inventory distribution with a **Foreign Trade Zone (FTZ)**, focused on **inventory optimization, motor assembly, and hands-on training** at our Power Institute.



### LUFKIN, TX

**Manufacturing and Services**

This 60,000 sq ft facility handles gear **manufacturing**, gearbox **repairs**, and reverse **engineering**.



### VERONA, VA

**Industrial Gearbox Production**

Purpose-built facility specifically designed to handle the assembly of our **large industrial gearboxes**.