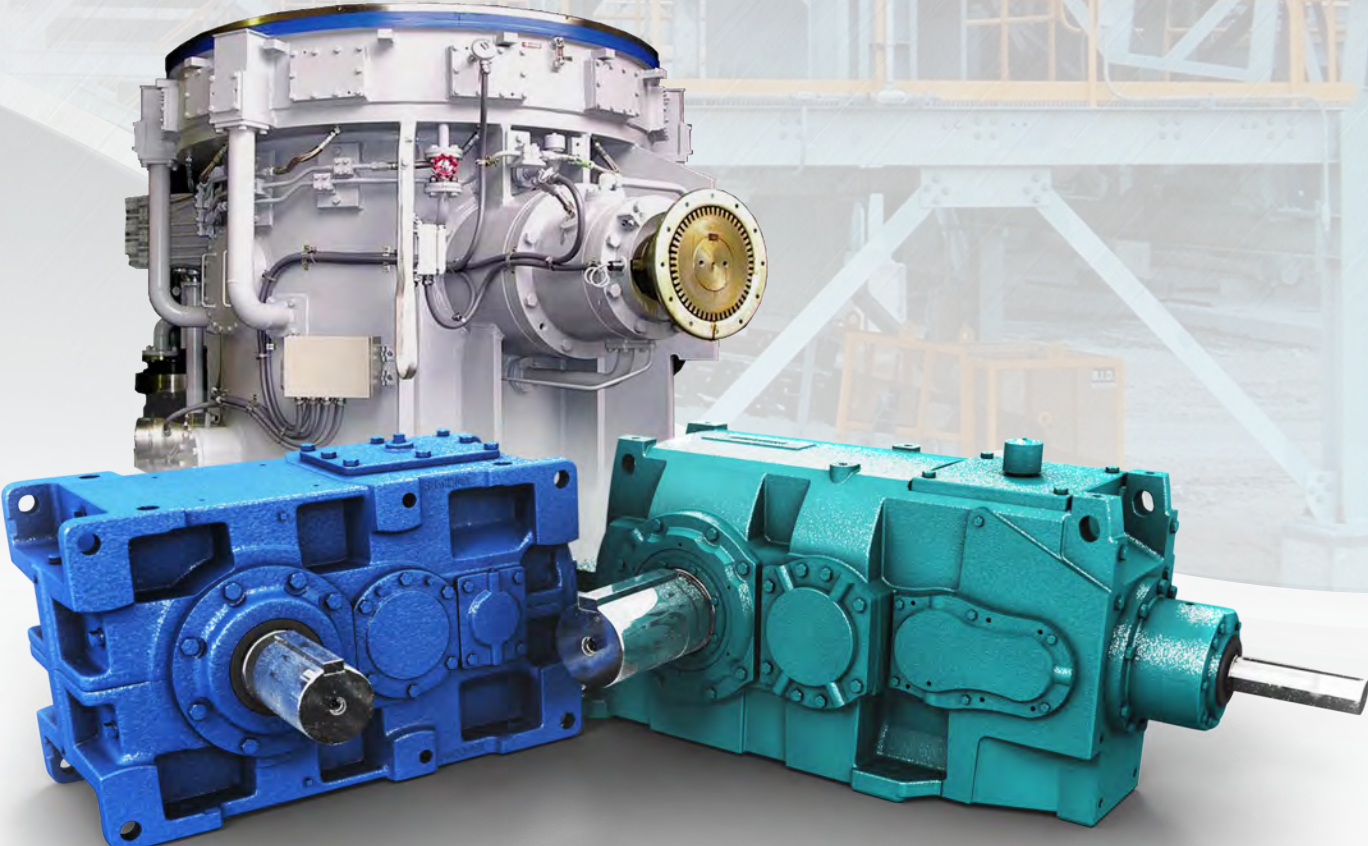
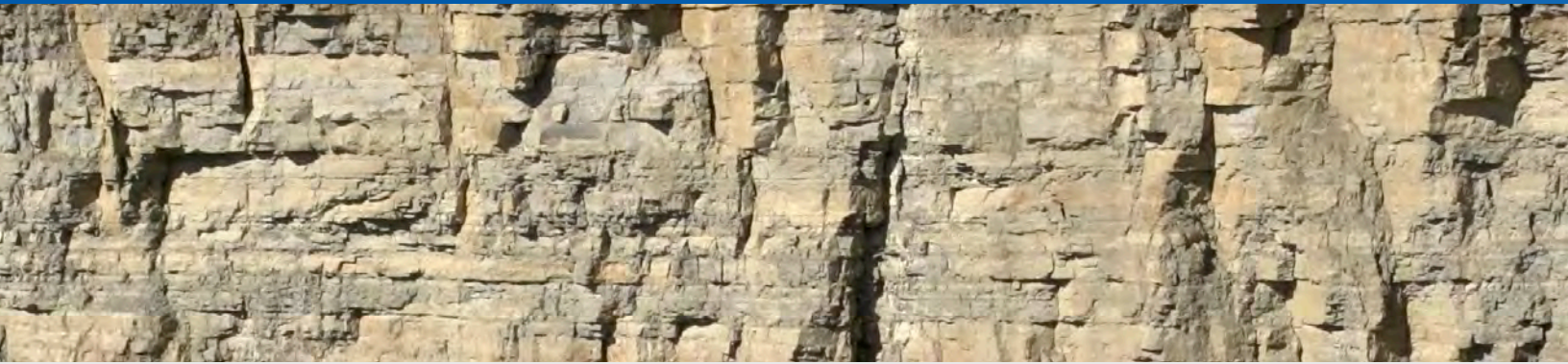


Cement Industry

Reliable Power Transmission Drives





For 50 years, Sumitomo Machinery Corporation of America has been supplying some of the most durable, reliable and efficient power transmission drives to help cement plants throughout the Americas maximize plant uptime and improve process efficiencies.

It's no secret that the cement industry places heavy demands on power transmission drives. Dust, high shock loads, and tough operating conditions all take a toll on the equipment that keeps your operation thriving.

Your power transmission drives must be durable, reliable and efficient. This isn't an option; this must be the standard. Sumitomo Machinery Corporation of America understands the challenges you face, which is why the solutions we offer are designed to withstand the harshest conditions while delivering the highest level of performance.

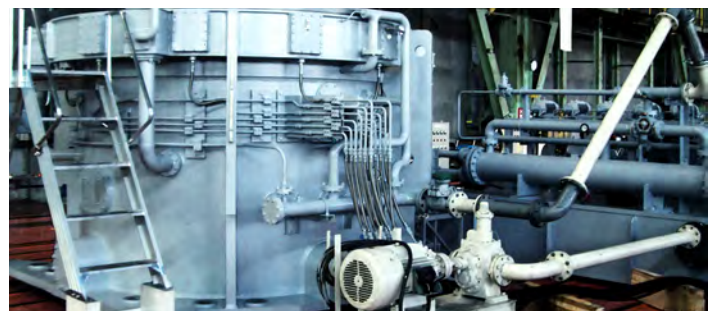
Distinguished for their robust design, easy installation and low maintenance, our drives minimize your costs while maximizing plant uptime. Small wonder that so many industry leaders rely on Sumitomo Machinery Corporation of America to meet their power transmission requirements.

Sumitomo Americas

Sumitomo Machinery Corporation of America (SMA) is a subsidiary of Sumitomo Heavy Industries (SHI), a global leader in power transmission knowledge and innovation. With installations worldwide, SMA develops products that are the preferred choice of some of the largest companies in the cement industry.



Paramax conveyor drive



Vertical mill drive



Torque Ranges

Sumitomo offers a comprehensive lineup of premier power transmission products to keep customers' operations performing at their best. This includes the broadest range of the most reliable and highest quality speed reducers, gearmotors and large industrial gearboxes available in the industry.

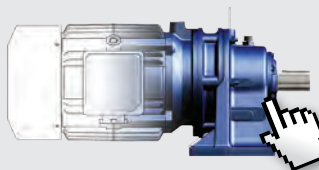
Torque (lbs·in)		8.85	88.5	885	8,850	88,507	885,075	8,850,746
Inline	Cyclo® 6000		55 - 603,000 lb·in (6.2 - 68,130 N·m)					
	Hyponic®		44 - 13,100 lb·in (5 - 1,480 N·m)					
Right Angle	Cyclo® BBB 5 Series			1,095 - 45,450 lb·in (124 - 5,140 N·m)				
	Cyclo® BBB 4 Series			1,088 - 159,983 lb·in (123 - 17,400 N·m)				
Offset Parallel	Cyclo® HBB			1,080 - 75,800 lb·in (122 - 8,564 N·m)				
	Helical Shaft Mount			3,900 - 388,884 lb·in (440 - 43,938 N·m)				
Large Industrial	Paramax® 9000				23,012 - 4,885,614 lb·in (2,600 - 552,000 N·m)			
	Hansen P4 Single-Stage				40,000 - 1,504,00 lb·in (4,519 - 170,000 N·m)			
	Hansen P4 Multi-Stage				46,000 - 9,735,825 lb·in (5,200 - 1,100,000 N·m)			
	Hansen P4 Vertical				105,000 - 9,700,000 lb·in (11,863 - 1,095,000 N·m)			
	Hansen P4 UniMiner				122,000 - 889,000 lb·in (13,784 - 100,445 N·m)			
	Seisa				DP1000: 40,713 - 6,515,000 lb·in (4,600 - 736,000 N·m) Mill Drives: 7,806,362 - 42,625,212 lb·in (882,000 - 4,816,000 N·m)			
Torque (N·m)		1	10	100	1,000	10,000	100,000	1,000,000



Product Configurator: www.sumitomodrive.com/Configurator

Sumitomo Drive Technologies' online product Configurator streamlines the selection process, enabling you to build **our power transmission products for your specific application.**

Configure your Sumitomo Drive Technologies products today at www.sumitomodrive.com/Configurator



Product Support

Helping you maximize the life of your gearboxes

Sumitomo's Product Support offers scheduled repair services as a one-stop-shop for all your related gearbox needs. For emergency repairs, we offer a 24 to 72-hour turnaround.

Sumitomo's Product Support has the experience required to explore a wide range of approaches, tools and techniques to uncover the causes of most challenging problems.

Most of the services offered at our shops can be replicated at customer sites. As part of this offer, customized training can be delivered at your site to help reduce costs and increase productivity.

Sumitomo products are built to last. Our drives are known among industry leaders as some of the finest and longest-lasting products available. Nevertheless, we include a standard warranty with all of our products at no extra cost.

-  REPAIRS
-  FIELD SERVICES
-  ROOT CAUSE INVESTIGATION
-  INSPECTION REPORTS
-  COMMISSIONING & START-UP SERVICES
-  WARRANTY SERVICES

We can help you save record amounts of energy without compromise

We understand that your profitability depends on maintaining efficient operations. We can help.

Sumitomo's products are recognized for their compact designs, light weight, and for providing the desired torque to meet the demands of 24/7 operations. Cement manufacturing requires high durability as abrasion, corrosion; high temperatures and intense pressures are constant challenge.

- The **Paramax**® product line offers the toughest and most reliable gear drives available in the market. It features double, triple and quadruple reduction gearboxes, global standardization and 26 frame sizes. An optional auxiliary inching drive is available to allow conveyors to run loaded at reduced operating speeds during inspection and maintenance.
- Available in 19 different sizes with two, three or four-gear stages, the **Hansen P4** excels in low noise, low vibration and high torque gear geometry. The excellent construction of the Hansen P4, together with the commitment to apply state-of-the-art gear technology, leads to remarkable power and performance.
- ■ **Seisa** products are recognized as the leaders in mill applications. This product line can be found in cement plants worldwide driving raw mills, clinkers, gypsums and other mill applications. It offers simple construction, high reliability and low installation cost.
- The **Cyclo**® 6000 is Sumitomo's gearless gearbox. Unlike conventional gears with teeth that grind, wear and break, this unique design results in high efficiency, quiet operation and shock load capacities of up to 500%.
- The **Cyclo**® BBB4 offers a unique combination of features that result in a highly reliable, efficient and durable gearbox. The all-steel internal construction, Cyclo® or planetary gear inputs, and the ductile iron housing provide unmatched ruggedness. The Cyclo® BBB4 is also available with hollow shaft or CEMA screw conveyor drive shaft options.
- **Cyclo**® HBB drives combine the advantages of the Cyclo® with helical gears to yield a high torque range in an offset parallel configuration. The Cyclo® HBB is also available with hollow shaft or CEMA screw conveyor drive shaft options.
- **HSM** reducers are available with hollow shaft or CEMA screw conveyor drive shaft options. It features keyless steel Taper-Grip® Bushing for easy mounting.

Blending and Storage Silo



Kiln



Limestone Quarry and Crushing plant



Coal Mill Building



Cooler



Bucket Elevator



Gypsum Storage



Product Key



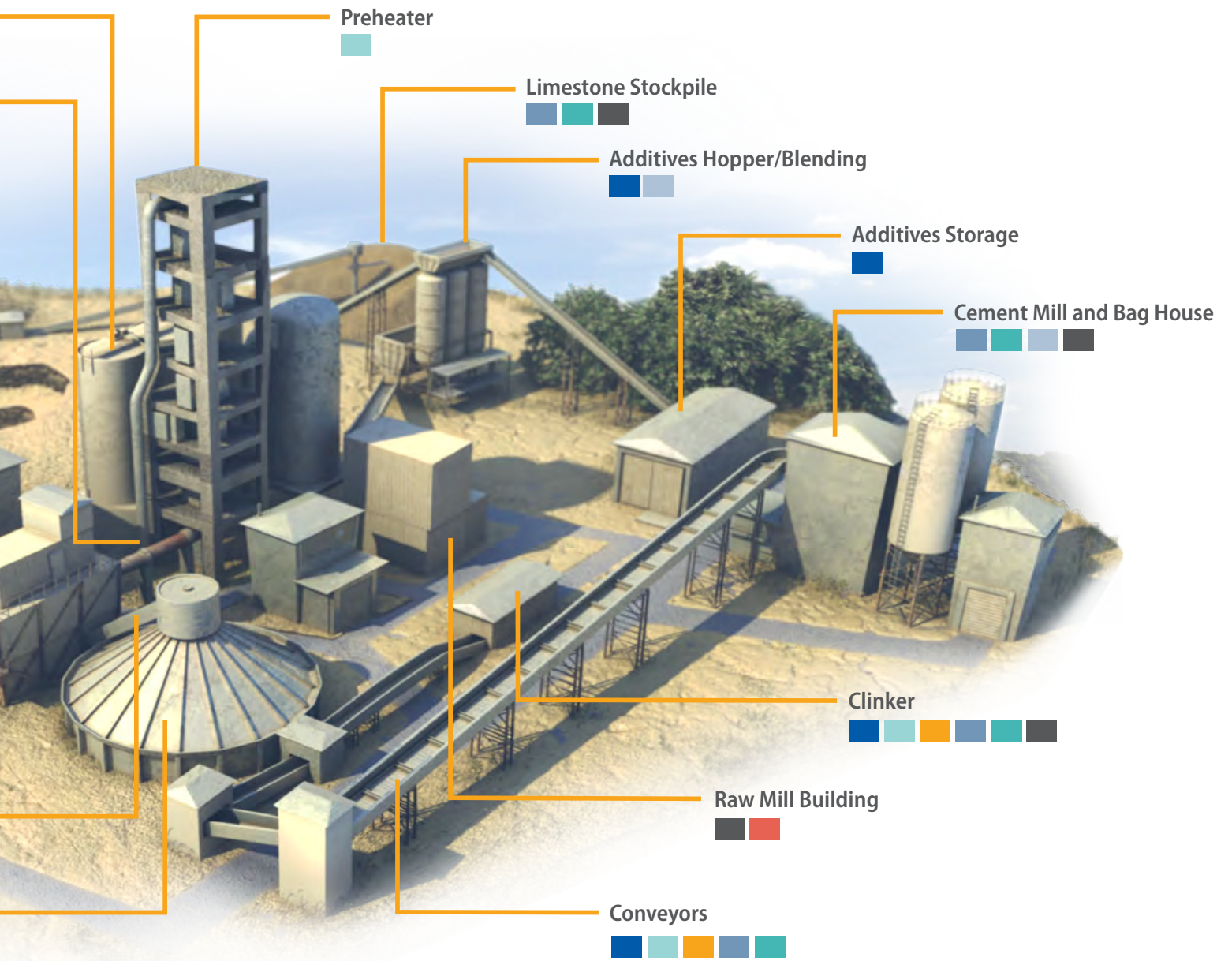
■ CYCLO® 6000



■ BBB4



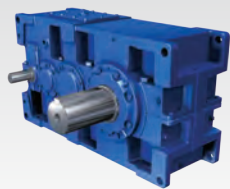
Cement Plant



HBB



HSM



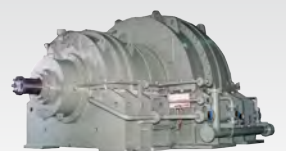
Paramax 9000



Hansen P4



Seisa Roller Mill

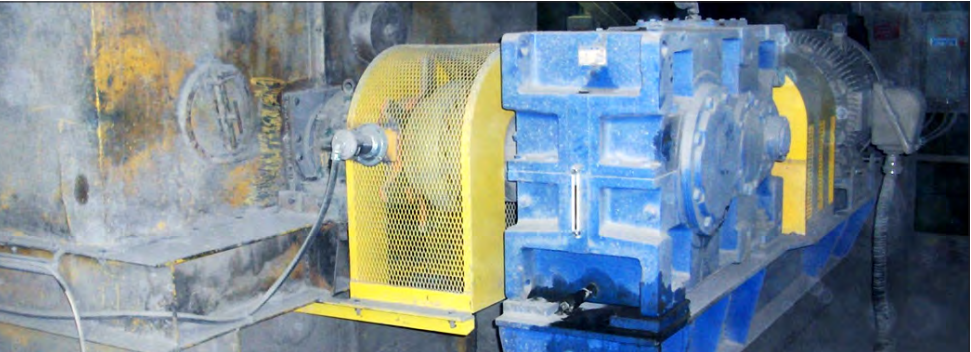


Seisa Ball Mill

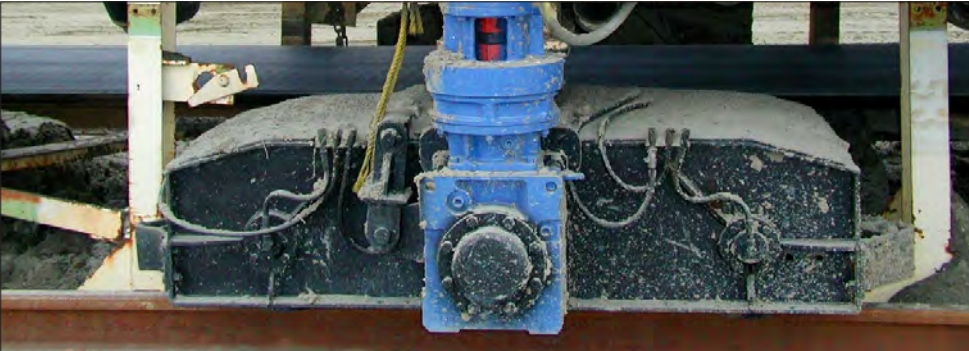


Applications

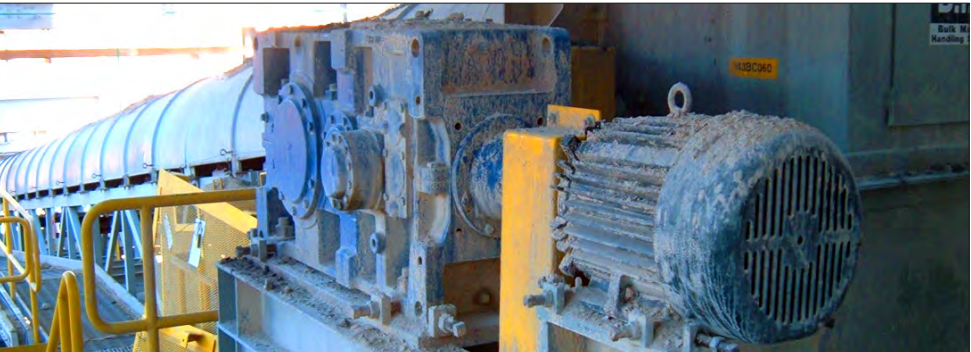
Bucket Elevators

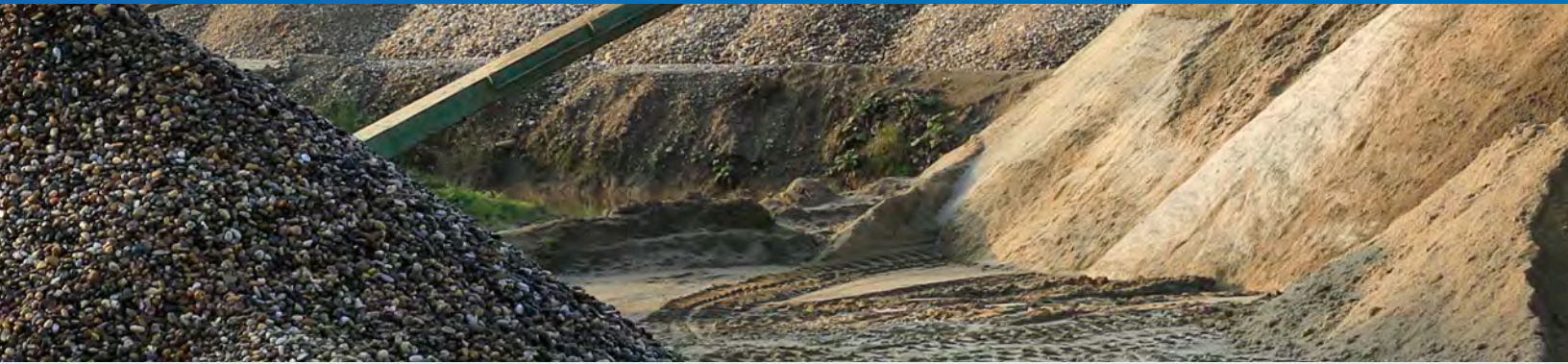


Travel Drives

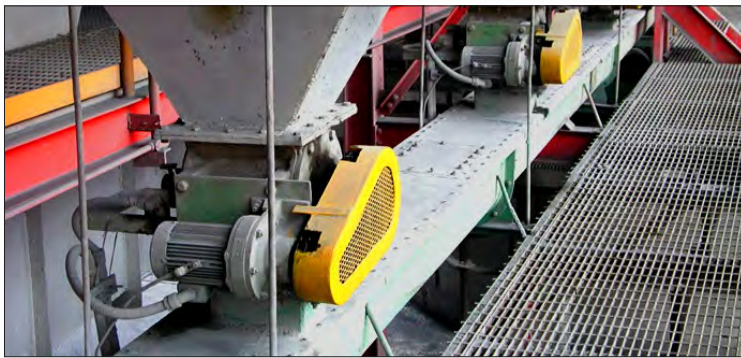


Conveyor Drives





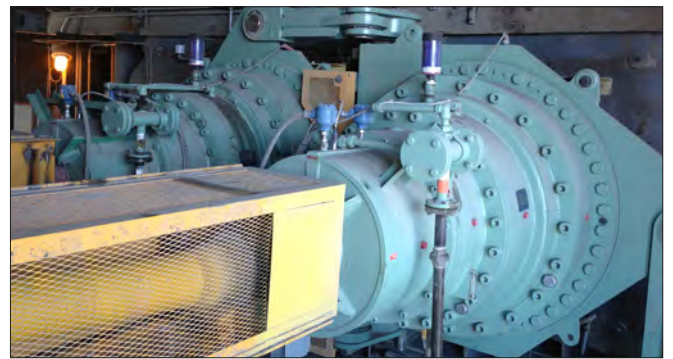
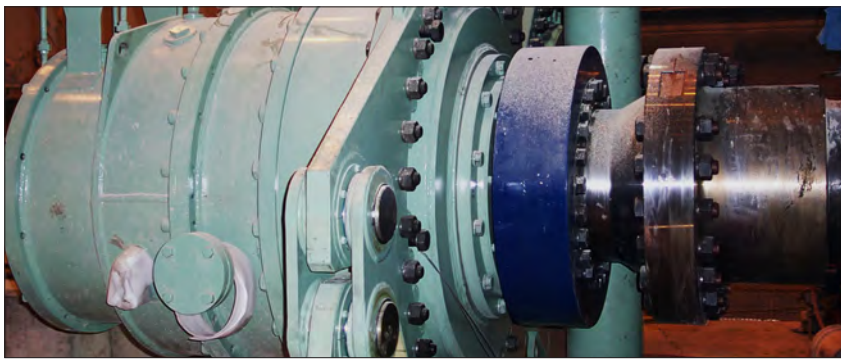
Metering Drives



Bucket Wheel Drive



Sizing/Crushing



Kilns



www.sumitomodrive.com/cement



Strength in One

Sumitomo Drive Technologies

Sumitomo, Hansen and Seisa. Three companies, one global power transmission solutions provider. Sumitomo Drive Technologies has facilities strategically located throughout the world, providing comprehensive products and services in your region.

