



Sumitomo Drive Technologies

Sumitomo, Hansen and Seisa. Three brands, one global power transmission solutions provider. Sumitomo Drive Technologies has facilities strategically located throughout the world, providing comprehensive products and services in your region.



- ★ MANUFACTURING HUB
- ASSEMBLY & SERVICE
- ▲ REGIONAL SALES OFFICE

Sumitomo Machinery Corporation of America
www.SumitomoDrive.com

For worldwide locations, please visit www.sumitomodrive.com/worldwide
Contact your local representative at www.sumitomodrive.com/representative
Tel: 1-800-SM-CYCLO (762-9256) 01.001.51.02 Product Showcase 2018



Product Showcase



We offer a comprehensive lineup of high quality power transmission products.

For any of your power transmission needs, we have the right product for you.

Robust, Reliable, Efficient



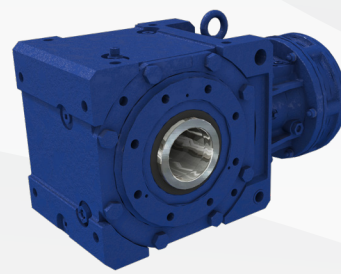
C CYCLO® 6000

- Up to 235 HP (175 kW)
- 1/2in to 7in (Solid Shaft)
- Up to 603,000 lb•in (68,130 N•m)
- 3:1 up to 658,503:1



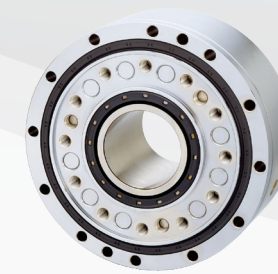
H HYPONIC®

- Up to 15 HP (11 kW)
- 3/4in to 2in (Hollow & Solid)
- Up to 13,100 lb•in (1,480 N•m)
- 5:1 up to 1,440:1



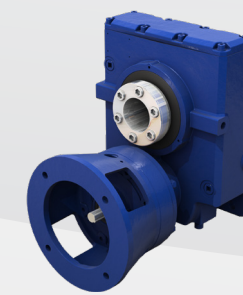
B4 CYCLO® BBB 4

- Up to 100 HP (75 kW)
- 1in to 4-15/16in (Hollow & Solid)
- Up to 159,983 lb•in (18,076 N•m)
- 11:1 up to 26,000:1 and greater



MC MOTION Control

- Zero mechanical backlash
- Up to 138mm (Hollow Bore)
- Up to 265,522 lb•in (30,000 N•m)
- 29:1 up to 283:1



HB CYCLO® HBB

- Up to 40 HP (30 kW)
- 1-3/16in to 6 1/2in (Hollow Bore)
- Up to 75,800 lb•in (8,564 N•m)
- 11:1 up to 26,492:1



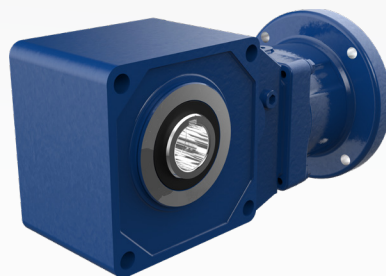
HS HELICAL Shaft Mount

- Up to 300 HP (224 kW)
- 107 to 608 (Hollow Bore)
- Up to 388,884 lb•in (43,938 N•m)
- 5:1, 9:1, 14:1, 20:1, 25:1



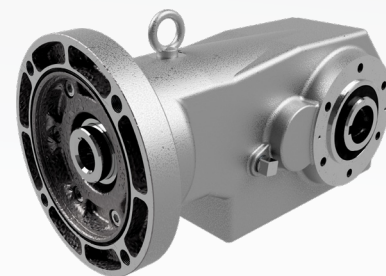
B5 CYCLO® BBB 5

- Up to 60 HP (45 kW)
- 1-3/16in to 3-3/16in (Hollow)
- Up to 45,450 lb•in (5,135 N•m)
- Up to 26,492:1 and greater



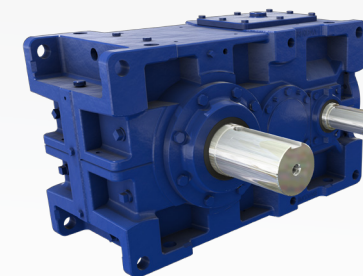
BH BBB H

- Up to 15 HP (11 kW)
- 40mm to 55mm (Hollow & Solid)
- Up to 9,028 lb•in (1,020 N•m)
- 5:1 up to 20:1



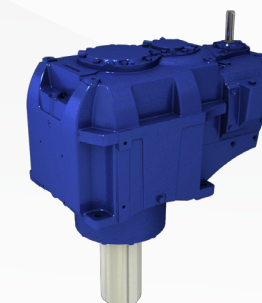
F FORTRESS®

- Up to 2 HP (1.5 kW)
- 3/4in to 1-7/16in (Hollow & Solid)
- Up to 1,970 lb•in (223 N•m)
- 7:1 up to 60:1



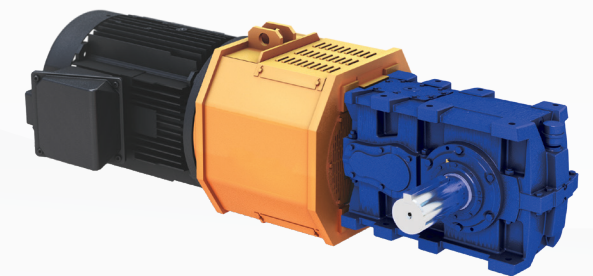
PX PARAMAX® 9000

- Up to 5,230 HP (3,900 kW)
- 5mm to 360mm (Hollow & Solid)
- Up to 4.9m lb•in (553,626 N•m)
- 6.3:1 up to 500:1 standard



P4 HANSEN P4

- Up to 14,080 HP (10,500 kW)
- 3.15in to 15.75in (Solid Shaft)
- Up to 9.7m lb•in (1.1m N•m)
- Up to 630:1 (and custom ratios)



U UNIMINER

- Up to 2,330 HP (1,738 kW)
- 7.5in to 4.625in (Hollow & Solid)
- Up to 889,000 lb•in (100,445 N•m)
- 8:1 to 71:1 (and custom ratios)



MOUNTING



INPUTS

SEALS

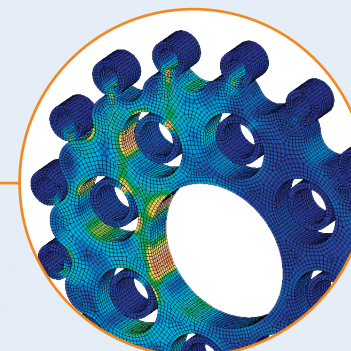
Wear sleeves and pressure-rated to prevent leaks

HOUSING

Rugged, shock-resistant cast iron housing. Optional ductile iron housing also available

RING GEAR HOUSING

High power density, all reduction contained in compact ring gear housing



500% MOMENTARY SHOCK LOAD

The Cyclo® design spreads the load across 2/3 of the reduction components, enabling the units to absorb and dissipate shocks better than typical concentric drives.

CYCLO® DISC

All rotating components are fully hardened, vacuum degassed bearing grade steel, for consistent, reliable performance

DYNAMIC AIR MOTIVATOR

MOTIVATOR COVER

END SHIELD

HIGH-SPEED SHAFT

ECCENTRIC CAM

SLOW-SPEED SHAFT

OIL LEVEL INDICATOR



* Rating applies to specific products.

CYCLO® 6000

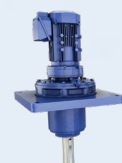
UNMATCHED RELIABILITY & EXCEPTIONAL PERFORMANCE

Cyclo® speed reducers and gearmotors are the **premier in-line drives**. The revolutionary Cyclo® design provides **quiet, efficient, and reliable** performance exceeding that of involute tooth gear designs.

Unlike geared designs, the Cyclo®'s reduction components operate in compression rather than shear, which results in exceptionally rugged and **shock resistant** performance.

The Cyclo® technology coupled with innovative product options and accessories offer the most extensive range of application solutions available.

OPTIONS



Overhead Drive



Mixer Drive

SPECS



HP RATING
Up to 235 HP
(175 kW)



DIAMETER
1/2in to 7in
(Solid Shaft)



TORQUE
Up to 603,000 lb-in
(68,130 N-m)



RATIO RANGE
3:1 up to 658,503:1



QUALITY HOUSING

Aluminum housing is lighter and increases thermal rating

SEALS

Multiple lip, harsh duty, and food grade designs available to prevent leaks



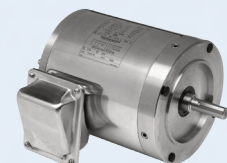
REQUIRES NO OIL CHANGES AND UP TO 93% EFFICIENT

The Sumitomo Hyponic® gearing represents over **25 years of hypoid gearing excellence**. With millions of Hyponic® units currently in service, the product features a compact, modular housing, maintenance-free grease lubrication and boasts a **gear efficiency of up to 93%** across all ratios.

The **maintenance-free** grease lubrication enables the unit to be mounted in any orientation without custom modifications. In addition to general-purpose solutions, with multiple food grade options, Hyponic® is perfect for **harsh, high-pressure wash-down environments**.

Simplify your gear drive assembly and increase efficiency by switching to Hyponic®.

OPTIONS



Stainless Steel Motor



SHIELD360® Protection Packages

SPECS



HP RATING
Up to 15 HP
(11 kW)



DIAMETER
3/4in to 2in



TORQUE
Up to 13,100 lb•in
(1,480 N•m)



RATIO RANGE
5:1 up to 1,440:1

ALL-STEEL HYPOID GEARING

Patented Hyponic® gear technology is up to 93% gear efficient across all ratios providing a smooth, quiet operation which does not require a cooling fan.

HYPOID PINION

Single-piece all steel hypoidal pinion for longer life. Lasts millions of cycles without measurable wear

QUILL O-RING

Prevents water intrusion

C-FACE QUILL

Supported by two bearings for long life, the quill style motor adapter allows for maximum motor flexibility

DUEL BEARING SUPPORT

DUEL BEARING SUPPORT

OPTIONS

• Shrink Disc

• Stainless Steel Motor

INDUSTRIES



Fruit & Veg



Meat Processing



Pharmaceutical

NEMA QUILL C-FACE

The quill style motor adapter allows for maximum motor flexibility. Supports NEMA 56C, 143TC, and 145TC

HYPOID PINION

Single-piece all steel hypoid pinion with dual bearing support for longer life. Lasts millions of cycles without measurable wear

COVER PLATE

Precision machined internal surface with seal groove to enhance the maintenance-free sealed-for-life unit

ALL-STEEL HYPOIDAL GEARS

Long-lasting hypoid gear efficiencies up to 93% with smooth and quiet operation

CONTOURED HOUSING

Unique design reduces the build-up of bacteria in those hard to reach areas

CASSETTE SEAL

Antimicrobial FKM Shaft Isolator seal packed with food grade grease and all stainless steel wearing ring and springs

HIGHLY EFFICIENT, GREASE LUBRICATED, COMPACT DESIGN

With over 25 years of hypoid gearing excellence, we are experts in efficiency. Fortress™ features a compact, modular housing, food grade grease lubrication, and boasts up to 93% gear efficiency. The IP69K rating also means that it's perfect for harsh, high-pressure wash-down environments.

The maintenance-free grease lubrication enables the unit to be mounted in any orientation without custom modifications. Additionally, take advantage of our flange, foot-mount, and torque arm options which drop right in, allowing you to conveniently replace those old, inefficient gearboxes.

Simplify your gear drive assembly, increase your efficiency, and protect your operation by switching to Fortress™.



With our all-new Fortress™ gearbox, never worry about paint again. The stainless steel cast 304 housing offers resistance to the most caustic environments and the unique contour design reduces the build-up of bacteria in those hard to reach areas.

Our cutting-edge in-house laser etching technology ensures a cleaner finish by eliminating the need for an attached nameplate. This, coupled with our patented hypoid gear technology, means you have a cooler operating, more efficient, cleaner, and maintenance-free operation.

SPECS



HP RATING
1/2 HP to 2 HP
(1.5 kW)



DIAMETER
3/4in to 1-7/16in

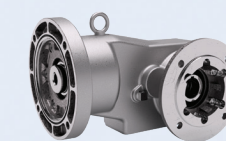


TORQUE
Up to 1,970 lb-in
(223 N·m)

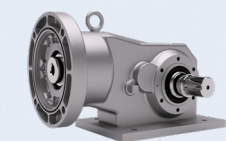


RATIO RANGE
7:1 up to 60:1

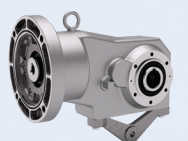
MOUNTING



• Flange Mount



• Foot Mount



• Torque Arm



DUCTILE IRON HOUSING

Twice as strong as cast iron, making it one of the most rugged bevel gearboxes on the market

OPTIONAL TACONITE SEAL ASSEMBLY

Heavy-duty, fortified, grease purgeable system withstands the most demanding applications

TAPERED BEARINGS

Resist axial and radial loads simultaneously

TANDEM DUAL LIP SEALS

Prevent leaks and exclude contaminants

ONE PIECE PINION

Oversized, single-piece pinion provides a robust solution capable of 300% momentary shock-load. Designed and manufactured in the USA.

100% HARDENED STEEL COMPONENTS

Provide long life, smooth operation, and superior strength

BEARING

CYCLO® DISC

All rotating components are fully hardened, vacuum degassed bearing grade steel, for consistent, reliable performance

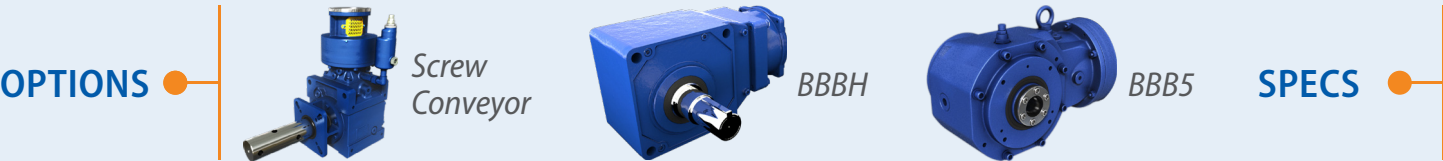
HIGH-SPEED SHAFT

B4 CYCLO® BEVEL BUDDYBOX® 4

RIGHT ANGLE SPIRAL BEVEL WITH CYCLO® OR PLANETARY INPUTS

A robust, state-of-the-art, mid-sized family of speed reducers and gearmotors. The Cyclo® BBB4 has a unique combination of features that result in a **highly reliable, efficient, and durable gearbox**. The all-steel internal construction, Cyclo® or planetary gear inputs and the ductile iron housing, provide **unmatched ruggedness**.

BBB5 and BBBH designs available for **low cost** and **low ratio** options.



HP RATING
Up to 100 HP
(75 kW)



DIAMETER
1in to 4-15/16in
(Hollow & Solid)



TORQUE
Up to 159,983 lb•in
(18,076 N•m)



RATIO RANGE
11:1 up to 26,000:1
and greater

- Flange Mount
- Face Mount
- Hollow Shaft



MOUNTING

- Taper-Grip® Bushing
- Gearmotor
- Brakemotor
- Quill
- C-Face



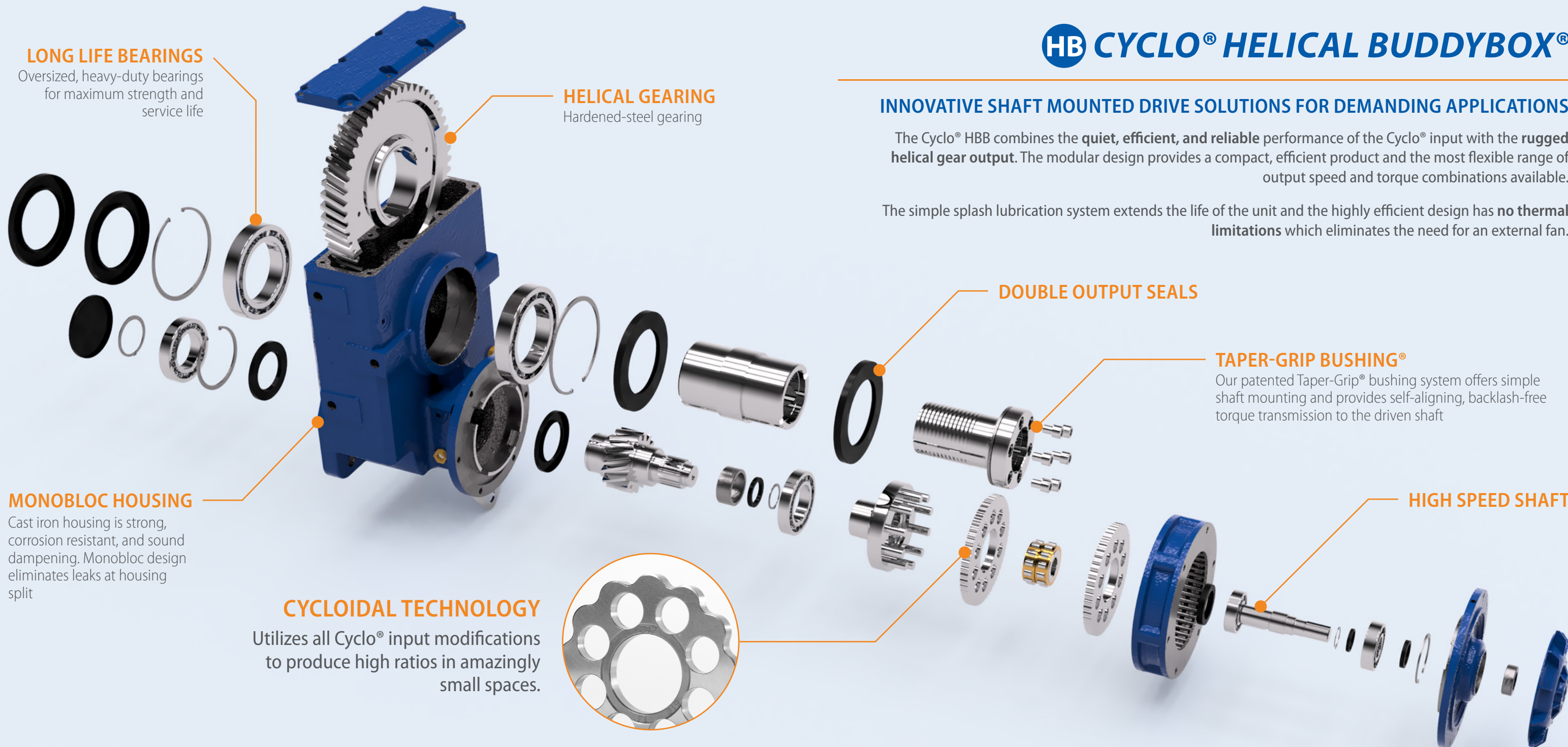
INPUTS & OUTPUTS

LONG LIFE BEARINGS

Oversized, heavy-duty bearings for maximum strength and service life

HELICAL GEARING

Hardened-steel gearing



MONOBLOC HOUSING

Cast iron housing is strong, corrosion resistant, and sound dampening. Monobloc design eliminates leaks at housing split

CYCLOIDAL TECHNOLOGY

Utilizes all Cyclo® input modifications to produce high ratios in amazingly small spaces.

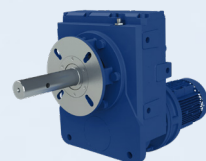
DOUBLE OUTPUT SEALS

TAPER-GRIP BUSHING®

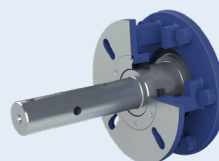
Our patented Taper-Grip® bushing system offers simple shaft mounting and provides self-aligning, backlash-free torque transmission to the driven shaft

HIGH SPEED SHAFT

OPTIONS



CEMA Screw
Conveyor Drive



Lip Seal

SPECS



HP RATING
Up to 40 HP
(30 kW)



DIAMETER
1-3/16in to 6 1/2in
(Hollow Bore)



TORQUE
Up to 75,800 lb-in
(8,564 N·m)



RATIO RANGE
11:1 up to 26,492:1

HB CYCLO® HELICAL BUDDYBOX®

INNOVATIVE SHAFT MOUNTED DRIVE SOLUTIONS FOR DEMANDING APPLICATIONS

The Cyclo® HBB combines the **quiet, efficient, and reliable** performance of the Cyclo® input with the **rugged helical gear output**. The modular design provides a compact, efficient product and the most flexible range of output speed and torque combinations available.

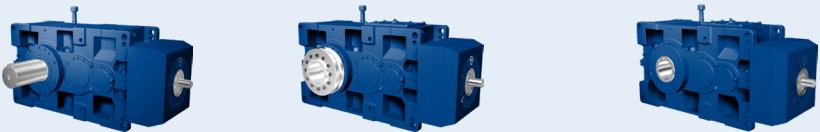
The simple splash lubrication system extends the life of the unit and the highly efficient design has **no thermal limitations** which eliminates the need for an external fan.

- Immersion Heater
- Creep Drive
- Anti-Dust Breather



ACCESSORIES

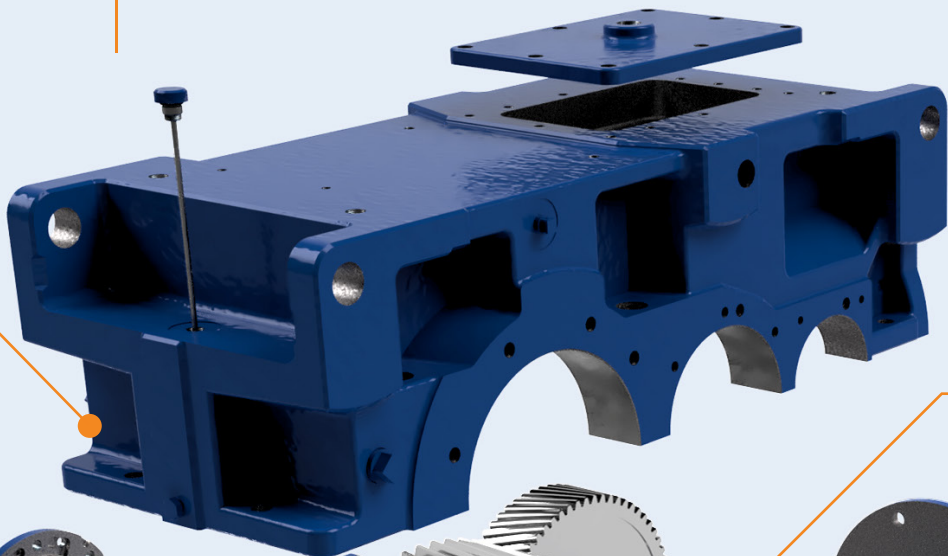
- Solid Shaft
- Shrink Disc
- Keyed Hollow Bore



OUTPUTS

AVAILABLE SPLIT HOUSING

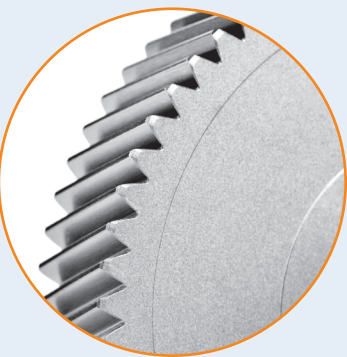
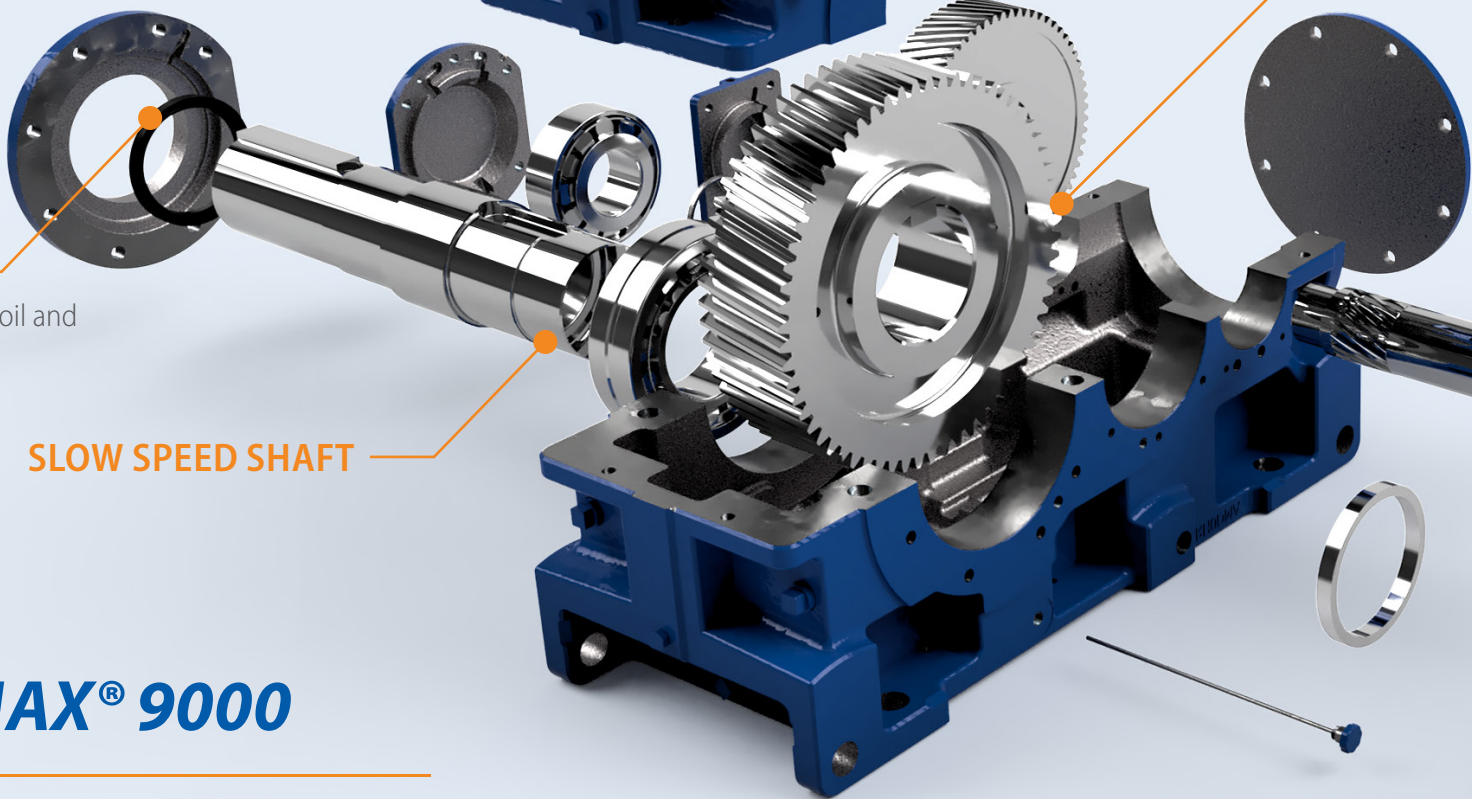
Offered in large frame sizes allowing easy maintenance. Large inspection port provides a window for gear inspection. Standard gray cast iron with ductile and fabricated steel options



TACONITE SEAL

Option features a dual layer oil and grease sealing system

SLOW SPEED SHAFT



CASE CARBURIZED GEARING

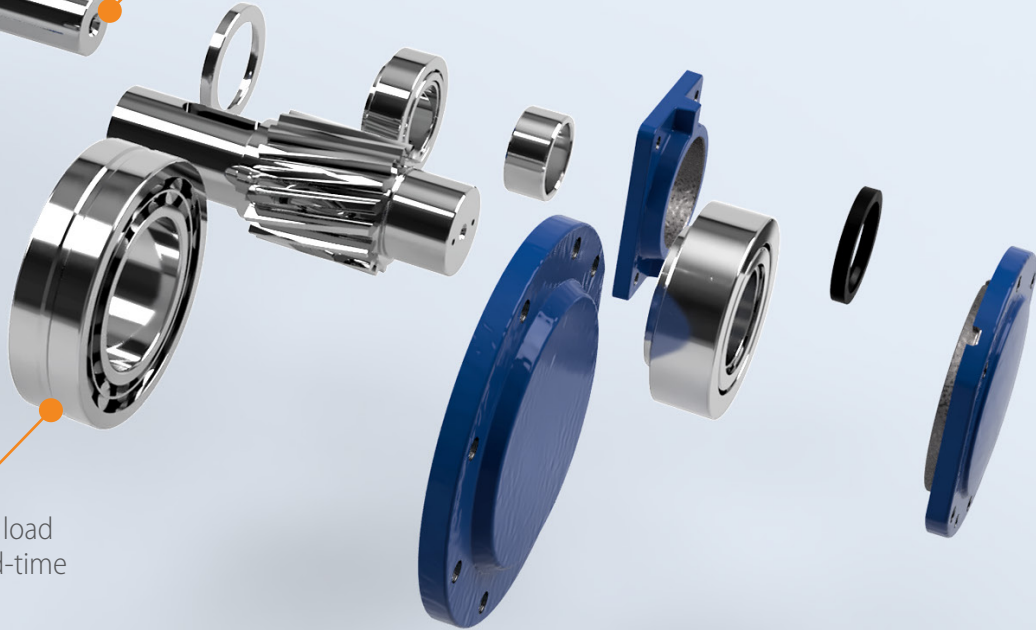
High precision case carburized gearing with a 25° pressure angle offer a thicker dedendum and higher strength ratings than the typical 20° pressure angle.

HIGH TENSILE SHAFT

Strong shaft material optimized for extended operation in rugged environments

SPHERICAL ROLLER BEARING

High capacity bearings increase load capacity without increasing lead-time



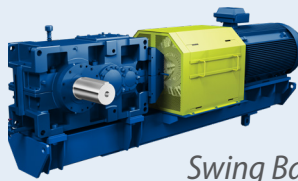
PX PARAMAX® 9000

PARALLEL & RIGHT ANGLE LARGE INDUSTRIAL GEARBOXES

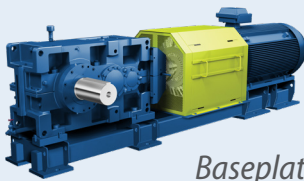
Paramax® parallel and right angle drives are some of the largest and most durable power transmission systems operating in the world. The series features double, triple, quadruple reduction gearboxes, global standardization and availability, and support from our worldwide locations.

Other accessories: Cooling Fan with Split Fan Hood, Resistance Temperature Detector, Coupling Guards & more.

MOUNTING



Swing Base



Baseplate

SPECS



HP RATING
Up to 5,230 HP
(3,900 kW)



DIAMETER
5mm to 360mm
(Hollow & Solid)



TORQUE
Up to 4.9 million lb•in
(553,626 N•m)

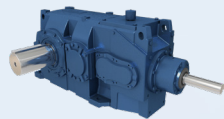


RATIO RANGE
6.3:1 to 500:1
Standard

• Vertical Mixer



• Multi-Stage

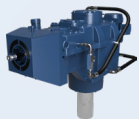


• Single-Stage



ORIENTATIONS

• Drop Bearing



• Rigid Flange



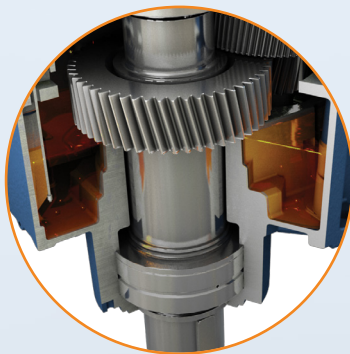
• Hollow Shaft



OUTPUTS

SPLIT HOUSING

Rugged, split housing for horizontal and vertical applications. The Integrated Drywell provides a truly leak-proof low-speed shaft.



BEARINGS

LARGE OIL CAPACITY

Ensures bearings are lubricated at start up to maximize reliability and life

PINION SHAFTS

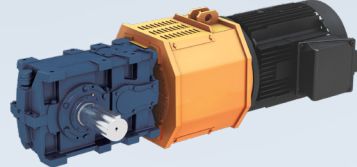
Rigid standardized pinion shafts and housings for better lateral load distribution

WIDE BEARING SPAN

Standard increased bearing span for vertical applications for stronger shaft support

SLOW SPEED SHAFT

OPTIONS



UniMiner
Flippable housing and horizontal split line make the ideal alignment-free drive package for mining

SPECS



HP RATING
Up to 14,080 HP
(10,500 kW)



DIAMETER
3.15in to 15.75in



TORQUE
Up to 9.7 million lb•in
(1.1 million N•m)



RATIO RANGE
Up to 630:1 (Custom ratios available)

P4 HANSEN P4

REMARKABLE POWER AND PERFORMANCE WITH LOW NOISE

The Hansen P4 multi-stage gear unit is **market leading in quality and technology**, excelling in **reliability and durability**. The rugged housing, along with our commitment to innovating state-of-the-art technology, provides remarkable **power and performance**.

The unique **Oil-Lock™** system offers a **maintenance-free** seal on high speed shaft extensions, designed to keep the oil in and dirt out.

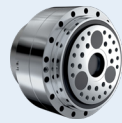
Optional accessories include: Motor Lantern, Multiple Sealing System, Torque Arm, Integrated Heating System, Cooling Fan/Coil, Humidity Resistant Paint, and Dust-Proof Breather.

• A-Series

• C-Series

• UA-Series

SERIES



• Output Shaft

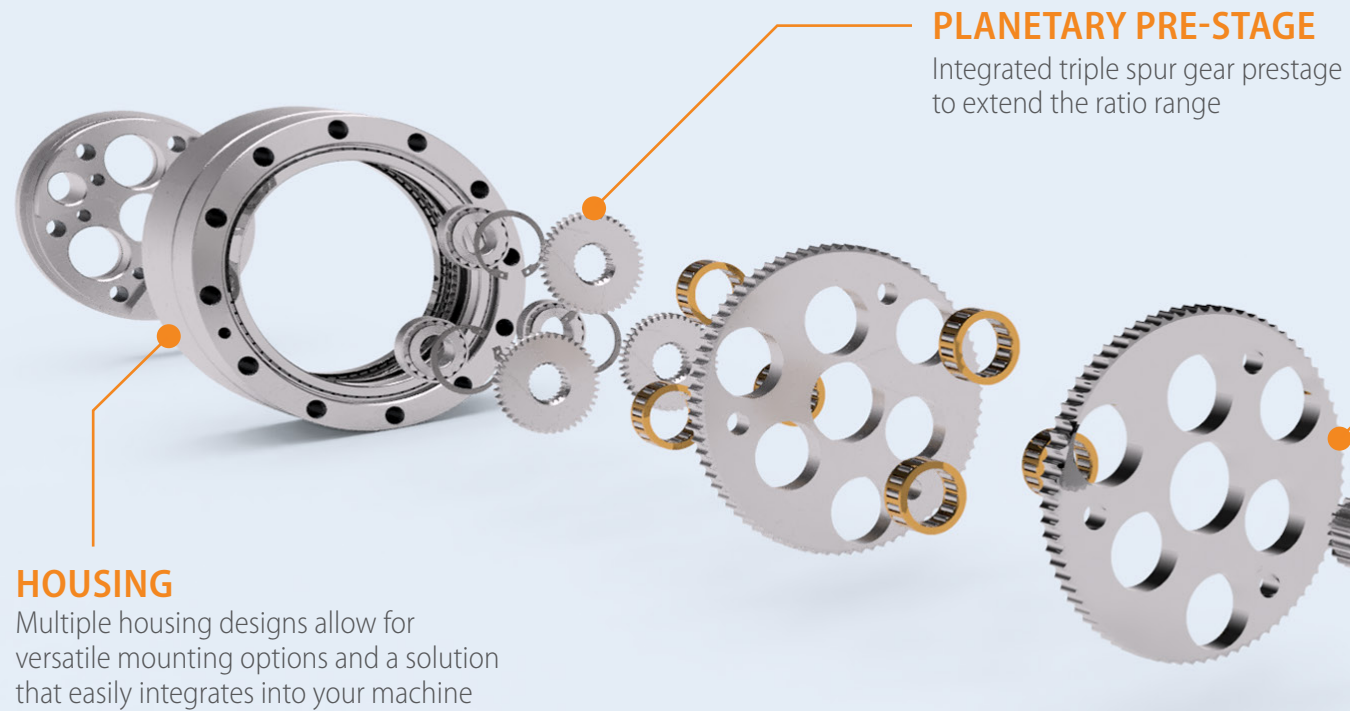
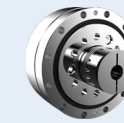
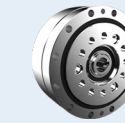
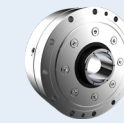
• Hollow Shaft

• Keyed

• Coupling

• Clamp Ring

INPUTS & OUTPUTS



HOUSING

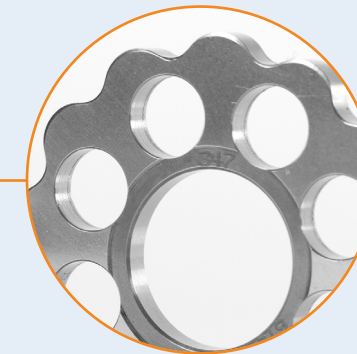
Multiple housing designs allow for versatile mounting options and a solution that easily integrates into your machine

PLANETARY PRE-STAGE

Integrated triple spur gear prestage to extend the ratio range

SUN GEAR PINION

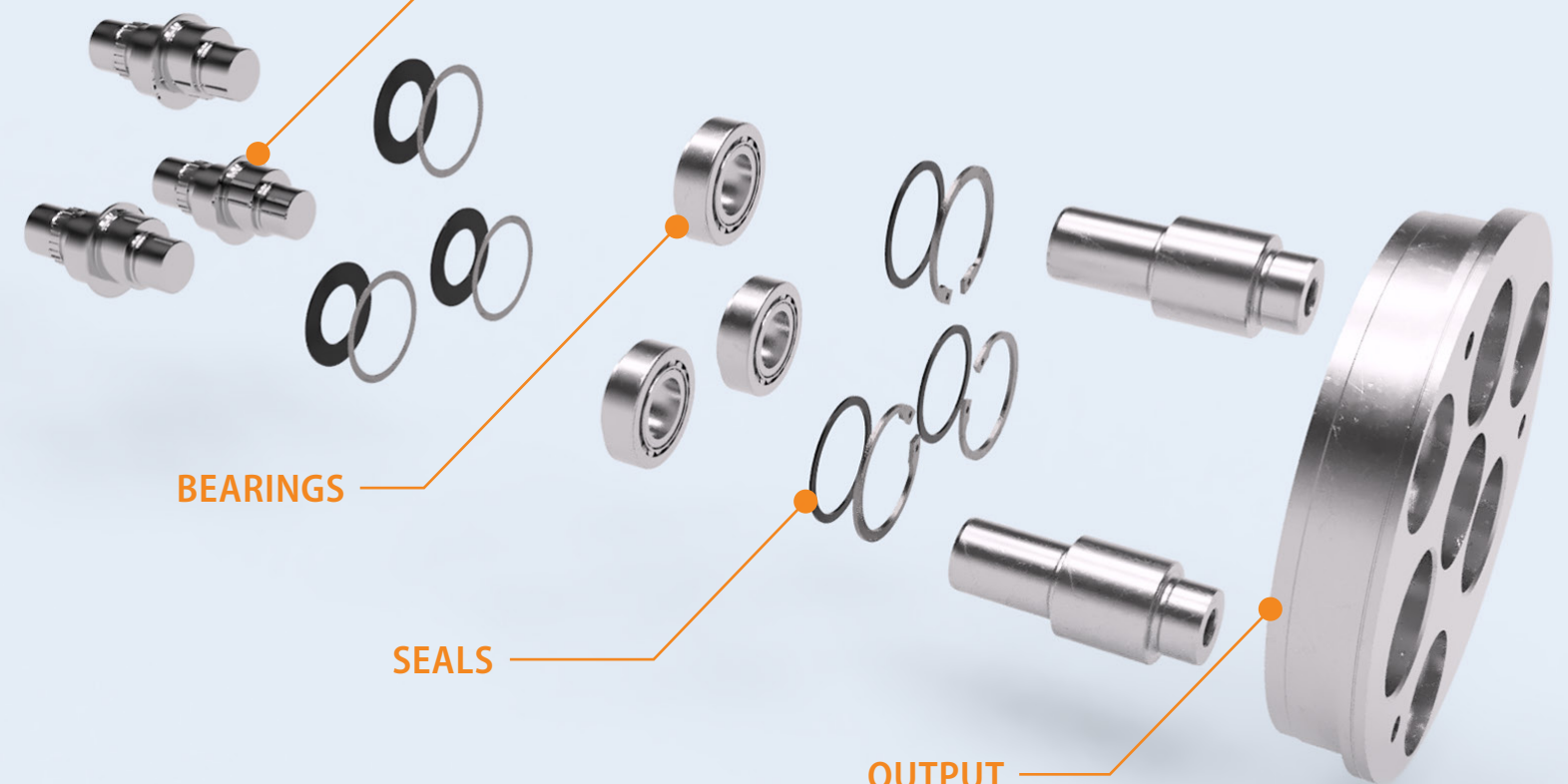
Input shaft driving the planetary prestage. Available in all input styles



CYCLO® DISC

The same proven Cyclo® technology found in our industrial reducers, designed and optimized for precision applications where zero backlash is required.

ECCENTRIC SHAFTS



BEARINGS

SEALS

OUTPUT

MC MOTION CONTROL

HIGH PRECISION POINT TO POINT AND TRAVERSE MOVEMENT

The Fine Cyclo® product series are high precision cycloidal gearboxes with zero backlash. These single and double stage gearboxes are highly compact in design, provide long life, and can be optimally integrated into your application. High torsion combined with their low moments of inertia, create ideal solutions for highly dynamic tasks.

A Series - High precision point to point movement. Single stage with high acceleration torque and bearing capacity.

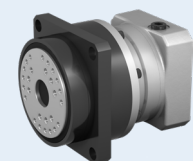
C Series - Large hollow shaft with high precision point to point movement. Fully sealed, single stage gearbox.

UA Series - Highly efficient traverse movement. Double stage gearbox with a planetary 1st stage and cycloidal 2nd.

Servorun sizing software

As part of our support in the design phase of new applications, our sizing software 'Servorun' verifies the gearbox selection as well as motor suitability.

OPTIONS



IB-Series



Cyclo® Servo 6000

SPECS



NOM TORQUE
Up to 106,209 lb·in
(12,000 N·m)



DIAMETER
Up to 138mm
(Hollow Bore)



ACCEL TORQUE
Up to 265,522 lb·in
(30,000 N·m)



RATIO RANGE
29:1 to 283:1

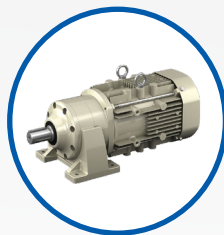


Altax®

Using our Cyclo® technology, the exceptionally robust Altax® line is compact and low noise. All models are maintenance free with grease lubrication. Altax® caters to a broad range of applications.

Torque: Up to 4,054 lb•in
(458 N•m)

Ratio: Up to 1,003:1
HP: Up to 5 HP (3.7 kW)

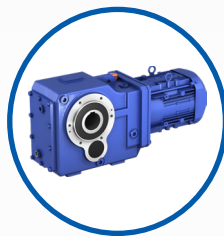


Rhytax®

Right-angle shaft speed reducer. Helical gearing provides low noise and high efficiency in a compact body. It has enhanced optional installation methods: foot, flange, and hollow shaft.

Torque: Up to 74,789 lb•in
(8,450 N•m)

Ratio: Up to 545:1
HP: Up to 60 HP (45 kW)



Helical Shaft Mount

Provides a simple and convenient equipment interface by mounting directly on the drive shaft. Uses our patented Taper-Grip® Bushing for quick reducer mounting and removal.

Torque: Up to 388,884 lb•in
(43,938 N•m)

Ratio: 5:1, 9:1, 14:1, 20:1, 25:1
HP: Up to 300 HP (224 kW)

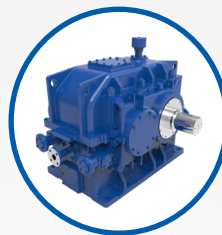


Custom Gear Drives

Custom Mill, Planetary, and High-Speed Drives available in a wide range of configurations. Tough, compact, and application specific designs for unique applications including API requirements.

Torque: Up to 6,515,000 lb•in
(736,000 N•m)

Ratio: Up to 1,400:1
Custom ratios available



Variators

Beier® Variator offers mechanical stepless speed control with high capacity and long life. Ideal for low horsepower, high torque applications requiring variable speed such as packaging machines.

Torque: Up to 603,620 lb•in
(68,200 N•m)

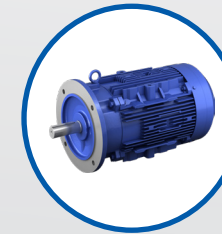
Ratio: Up to 10:1
HP: Up to 200 HP (150 kW)



Motors

EPNA motors are high performance, exceptionally cool running long lived motors with corona resistant insulation.

- UL, CSA, DOE Compliant
- NEMA Premium Efficient
- Inverter Ready,
10:1 Turndown
- Up to 74 HP (55 kW)



Inverters

Our line of inverters offer high performance, powerful functions and are user friendly. Their uses range from general purpose to more precise control with high starting torque.

Starting Torque: 200% at 1.3 Hz
Drives: Three-Drives-In-One
HP: Up to 30 HP (130 kW)
Input Choices: Up to 3



Couplings

Complete line of couplings for a wide range of applications. All couplings are manufactured to the highest specifications, and meet the most rigorous material specifications.

Torque: Up to 57m lb•in
(6.4m N•m)
Bore Size: Up to 35in
Type: Flexible, Grid and Disc



Additional Services



Online product configurator streamlines the selection process, enabling *you* to build our power transmission products for your specific application.
www.SumitomoDrive.com/Configurator



Same day, 1-day, and 2-day shipping on many of our standard products. For more information about Quick Ship, please consult your Sumitomo representative.
www.SumitomoDrive.com/QuickShip

*We take asset management seriously,
because we know you do.*

*Avoid catastrophic failure, minimize risk
and increase machine uptime.*

System Management And Reliability Technology (SMART)

SMART is a range of products and reducer options that were developed to help end users in their reliability and asset management initiatives within their plants daily operations.



Reliability Monitoring

These reducer option packages will help in the consistent collection of data. For Vibration analysis, as well as oil condition and cleanliness testing

Large Industrial Gearboxes

*OPTIONS**

- Opt 1: Machined Accelerometer Mounting Pads Only
- Opt 2: Opt 1 + Accelerometers Wired to Junction Box
- Opt 3: Opt 2 + Outputs to Customer PLC or DCS

YOU THINK!



Condition Monitoring

Fully customizable systems provide real time condition data of any piece of rotating equipment. Providing an accurate condition signal without the need for further analysis

All Gearboxes

*OPTIONS***

- Vibration + Temperature Input
- Vibration + Oil Level Input
- Vibration + Oil Condition

WE THINK!

CycloSMART® Benefits

- Safe**
Monitor assets from the safety of your desk via networked connections
- Predictive**
Machine diagnostics for early warning and detection to avoid failure
- Optimization**
Customizable systems to meet many different application needs
- Expandable**
Multi-reducer monitoring
- Reliable**
Schedule machine downtime to avoid lost production
- Cost-Effective**
Lower overall ownership cost

the **CHECK** 
ENGINE LIGHT for
SPEED REDUCERS

* All DriveSMART® options include: Oil sampling pitot tube, and Oil Breather package that incorporates oil fill and drain ports.
** All CycloSMART® systems are customizable with many different options for data monitoring. Examples are shown.

Learn more at: SumitomoDrive.com/CycloSmart



Our factory capabilities support all of your gearbox needs.

Our team of engineers creates custom solutions and a variety of drop-in units.

Product Support Group

Our personnel are the industry's most versed gearbox problem solvers. We provide both standard and tailored services, for maximum gearbox life.

Repairs

Scheduled & Emergency Repair

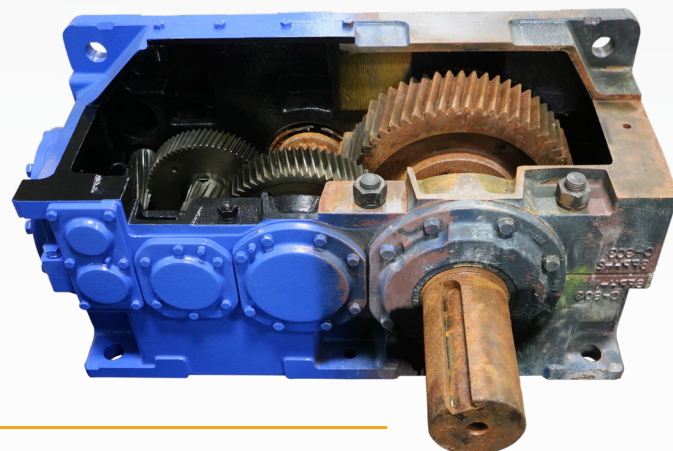
Repair services for all your related gearbox needs and 24-72 hour turnaround to the original factory specifications and warranty using Sumitomo-manufactured parts.

Extended warranty programs are available upon request.

Commissioning & Start-Up Services

The Key to Long Life

Our commissioning and start-up services ensure that your gearbox is deemed ready for service.



Special and Drop-In Units

Special Units

Custom Needs Require Custom Service

For non-standard gearing and custom ratios, we offer special customized units to fit in any application. From custom paint to intricate gearbox cooling systems, our team of engineers will make sure all of your custom gearbox needs are met.

With the right information, Sumitomo has the capability to meet all of your gearbox needs.

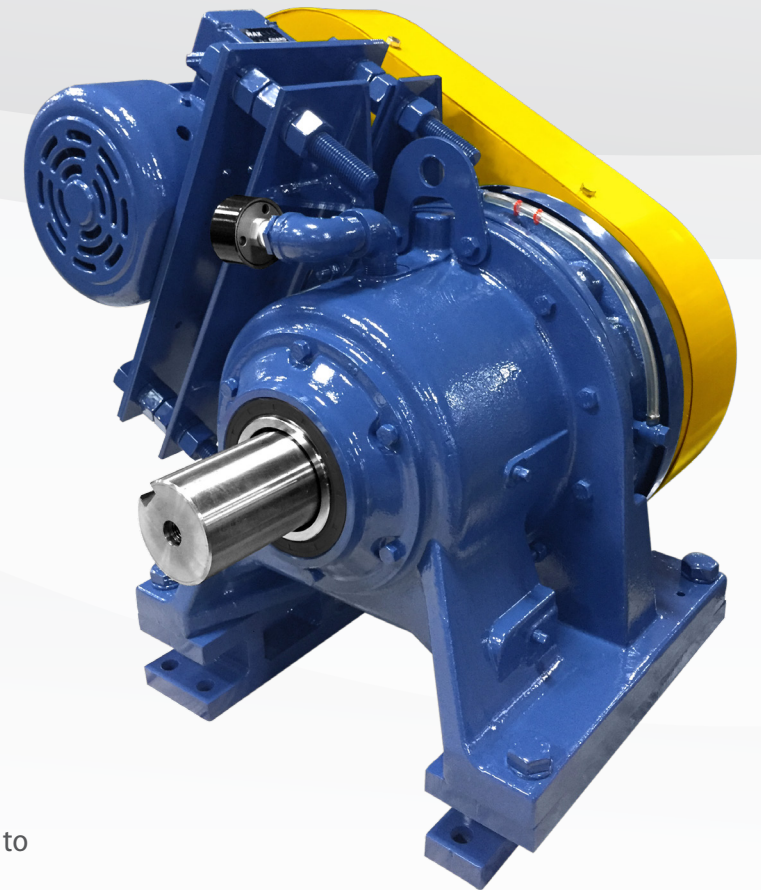
Drop-Ins

We Retrofit, You Drop-In

We offer special customized units to fit in an array of existing applications. Additionally, we offer drop-in gear drives to upgrade and replace obsolete units.

From fabricated steel housings, to custom baseplates, we can offer installation ready units that reduce your downtime and eliminate the need to re-engineer your system.

We have exceptional engineering and factory capabilities to support you on your gearbox needs.



Field Services

For Your Convenience

Most of the services offered and customized training can be performed on location.

Root Cause Investigation

Product Support

Apply a wide range of approaches, tools and techniques to uncover the causes of your problems.

Inspection Reports

Data

Professional, industry leading inspection reports detail findings, and highlight repairs required to return your gearbox to like new condition.

Contact Us

email: SMA.Service@shi-g.com

phone: 757-485-3355

web: SumitomoDrive.com

When you want the best solution and performance, reach for Sumitomo Gearboxes and Services!



Centers of Excellence

Our Centers of Excellence offer customers a nationwide support network. From inventory distribution to manufacturing to assembly, we have the team to ensure high quality, responsiveness, on time delivery, and quick lead times.

Chesapeake, VA

Manufacturing and Support
Western Hemisphere headquarters with 250k sq ft of manufacturing space, and cutting-edge technology.

C H B4 B5 HB HS 🔧



Louisville, KY

Small Gearmotor Production
Located in the heart of America. Supplies Cyclo®, Hyponic®, Fortress®, and HSM products to U.S. customers.

C H F HS



Corona, CA

Gearmotor Assembly and Support
Our West Coast location supplies Cyclo®, BuddyBox®, and Hyponic® products to U.S. customers.

C H B4 B5 HB 🔧



Suffolk, VA

Centralized Inventory Distribution
Foreign trade zone (FTZ), focused on inventory optimization & distribution to the Western Hemisphere.



Verona, VA

Industrial Gearbox Production
Purpose built facility, specifically designed to handle the assembly of large industrial gearboxes.

PX P4



Glendale Heights, IL

Gearmotor Assembly and Support
Houses our state-of-the-art paint booth for our SHIELD360® packages for Cyclo®, BuddyBox®, and Hyponic®.

C H B4 B5 HB 🛡️



Why Sumitomo?

Our 400 Year Heritage

The history of the Sumitomo Group started more than 400 years ago when Masatomo Sumitomo opened a book and pharmacy store in the city of Kyoto, Japan. Today, the Sumitomo Group consists of more than 20 companies who share the Sumitomo Emblem as well as many common values and ideals.

Devoted to Quality

In addition to one of the most comprehensive product lines of any power transmission company, we offer the most reliable and highest quality products available in the industry. Whether it's product development or manufacturing processes, our Quality culture resonates through our entire global network.

Committed to our Employees and the Community

We recognize our employees are our most valuable asset. They are the driving force behind our innovative products, our ability to support our customers, and our commitment to continuous process improvement. We strive to be a valuable member of society and take pride in the contributions we make to our communities across North and South America.

Dedicated to Innovative Manufacturing

With more than a century of expertise in manufacturing, our global capabilities are unmatched in the industry. We have manufacturing and assembly facilities on every continent and continue to make investments in our manufacturing technologies to maintain our position as a leader in innovation.

