



Sumitomo Drive Technologies

Sumitomo Drive Technologies

Sumitomo, Hansen and Seisa. Three brands, one global power transmission solutions provider. Sumitomo Drive Technologies has facilities strategically located throughout the world, providing comprehensive products and services in your region.



★ MANUFACTURING HUB

● ASSEMBLY & SERVICE

▲ REGIONAL SALES OFFICE

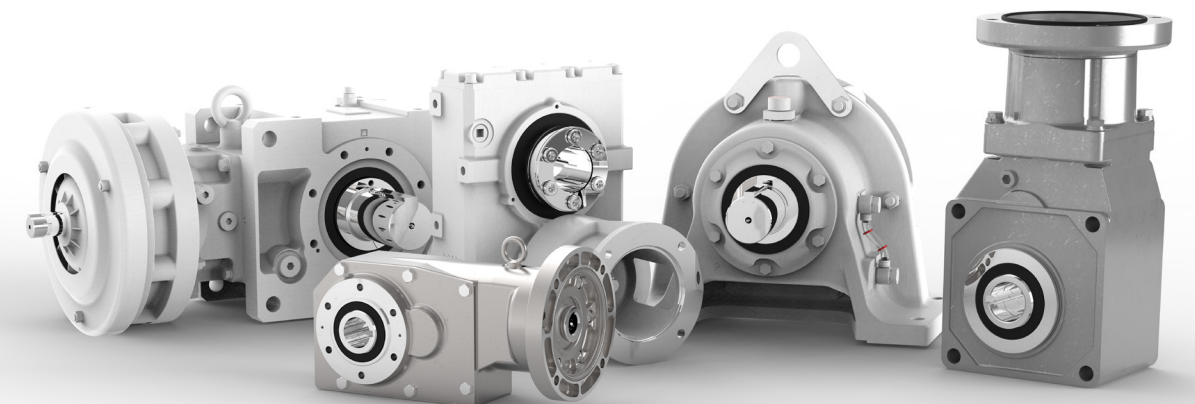
Global Headquarters,
Tokyo, Japan

Sumitomo Machinery Corporation of America

www.sumitomodrive.com

For worldwide locations, please visit www.sumitomodrive.com/worldwide
Contact your local representative at www.sumitomodrive.com/representative
Tel: 1-800-SM-CYCLO (762-9256)

Food & Beverage



Why choose Sumitomo Drive Technologies for Food & Beverage applications?

We have the toughest drives that can withstand the harshest environments.

We Know the Food & Beverage Industry

Governing sanitation bodies such as USDA, FDA, NSF, CFIA and 3-A are recommending higher levels of bacteria control and increased sanitation measures in food and beverage handling environments. With this sanitation focus, there is an industry-wide initiative to increase the chemical concentration, water temperature, and frequency that facilities are cleaning their equipment.

Given this greater focus, it is critical that all equipment utilized within a food handling facility be capable of withstanding repeated exposure without external degradation or compromise in performance. Recognizing this, Sumitomo Machinery Corporation of America has introduced **Fortress™** as well as the **SHIELD360®** family of protection packages. From general-purpose solutions to those geared to harsh, high-pressure washdown environments, Sumitomo has a response that will meet your most stringent demands.



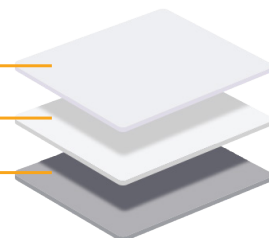
SHIELD360® Protection Packages

In order to resist high water pressure, humidity, acidity, and caustic environments, Sumitomo Drive Technologies developed SHIELD360® Protection Packages—a tri-layer coating system.

2-Part Epoxy Topcoat

2-Part Epoxy Color Coat

2-Part Epoxy Primer



Quality Food Grade Components

We offer top of the line food grade components to accompany our speed reducers.

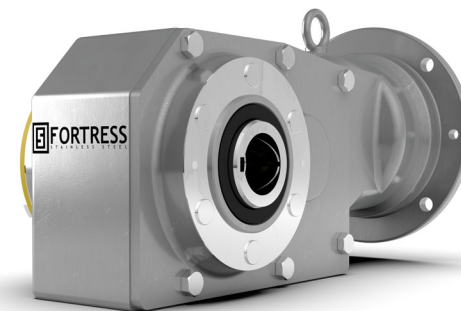
Cassette Seals

- Antimicrobial FKM material
- Spinning expels contaminants
- Self-contained and self-sealing



Optional Stainless Motors

- Totally enclosed stainless steel
- 100% paint free construction
- Double sealed ball bearings



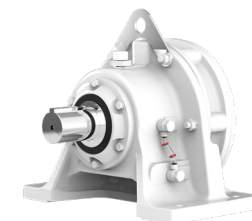
F Fortress™

Fortress™ features a compact, modular housing, food grade grease lubrication, and boasts up to **93% gear efficiency**. The **IP69K** rating also means that it's perfect for harsh, high-pressure wash-down environments. The **maintenance-free** grease lubrication enables the unit to be mounted in any orientation without custom modifications.



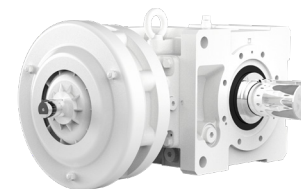
H HYPONIC®

- Universal Mounting
- Maintenance-Free
- Cool Operating



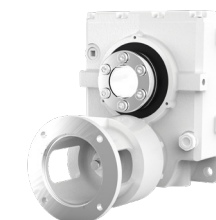
C CYCLO® 6000

- Cycloidal Technology
- Reliable Performance
- Compact Design



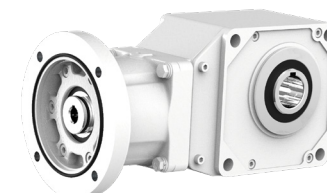
B4 CYCLO® BBB 4

- Taper-Grip® Bushing
- Compact Design
- Multiple Output Styles



HB CYCLO® HBB

- Cycloidal Technology
- Splash Lubrication
- Modular Design



BH BBB-H

- Low Reduction Ratios
- Compact Design
- Easy Grip Compatibility

Maintaining high levels of sanitation and machine integrity can be challenging.

We provide a complete package to protect your units from caustic environments.

The Challenge: Paint Failure

Facilities are operating longer hours and under harsh conditions to keep up with the demand from consumers. Given this greater focus, it is critical that the equipment utilized within a food and beverage processing facility is capable of withstanding long-term exposure without negatively impacting the performance or condition of the equipment.

Equipment Problems:

- Paint chips due to wash down chemicals/ high pressure wash
- Compromised integrity leads to downtime
- Vulnerability to other environmental elements
- Sub-standard lubrication
- Water exposure during washdowns
- Non-food grade motor options

The Solution: UltraSHIELD360[®]

Sumitomo Drive Technologies developed the UltraSHIELD360[®] package to provide customers with three layers of protection on their speed reducers. This package enables facilities to maintain the increasing sanitation levels all while preserving the integrity of the unit. Sumitomo has a response that will meet your most stringent demands.

Sumitomo Problem Solvers:

- Resistance to cleaning and sanitation compounds
- Longer product life and less unscheduled downtime
- Complete protection from dust, dirt, oils, and non-corrosives
- NSF H1 food grade lubricant, FDA 21 CFR compliant
- Food grade sealing solutions
- All stainless steel, totally enclosed motor



Conveyors



C B4 HB H F

Mixers



C B4 PX

Screw Conveyors



B4 HB

Agitators



C B4 HB H

Overhead Conveyors



C B4 HB

We meet the challenges that the food & beverage industry faces every day.

Sumitomo has the reliable solutions to meet any demand.

The Challenge: Total Cost of Ownership

For speed reducers, TCO is discussed in terms of initial purchase price, service life and operating cost. These factors are compiled into a rudimentary value. Often overlooked in TCO evaluation is the cost of the time to replace, the energy savings opportunity costs due to the energy wasted due to product inefficiency, and most importantly the cost of workplace injuries.

Operating Problems:

- Inefficient gearing technology
- Worm gear reducers operating at high temperatures
- Workers in close proximity of hot operating equipments
- Many burn injuries occur in the work place
- Injuries can lead to a significant amount of lost production hours, and workman compensation claims

The Solution: Fortress

With a comprehensive understanding of TCO, including a recognition of the need to mitigate risks to all, specifically in the F&B environment, SMA developed Fortress. A cool operating stainless steel speed reducer designed to displace old inefficient worm gears.

Sumitomo Problem Solvers:

- Operates with 50% less efficiency loss
- Simultaneously operating at temperatures as much as 53% less than the average worm gear reducer
- Optimized kW per hour use
- Industry leading TCO solution
- Less lubrication oxidation and optimal oil viscosity

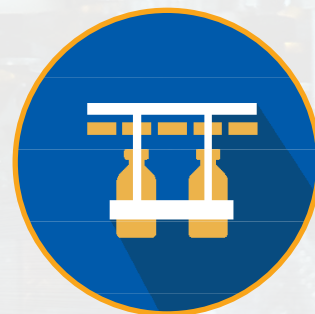


Packaging



C B4 HB H

Filling Equipment



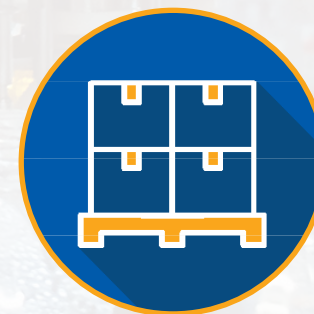
C B4 HB H F

Process Conveyors



C B4 HB H F

Palletizers



C B4

Process Equipment



C B4 HB F

*We take asset management seriously,
because we know you do.*

*Avoid catastrophic failure, minimize risk
and increase machine uptime.*

System Management And Reliability Technology (SMART)

SMART is a range of products and reducer options that were developed to help end users in their reliability and asset management initiatives within their plants daily operations.



Reliability Monitoring

These reducer option packages will help in the consistent collection of data. For Vibration analysis, as well as oil condition and cleanliness testing

Large Industrial Gearboxes

OPTIONS*

Opt 1: Machined Accelerometer Mounting Pads Only

Opt 2: Opt 1 + Accelerometers Wired to Junction Box

Opt 3: Opt 2 + Outputs to Customer PLC or DCS

YOU THINK!



Condition Monitoring

Fully customizable systems provide real time condition data of any piece of rotating equipment. Providing an accurate condition signal without the need for further analysis

All Gearboxes

OPTIONS **

Vibration + Temperature Input


Vibration + Oil Level Input

Vibration + Oil Condition

WE THINK!

CycloSMART® Benefits

- **Safe**
Monitor assets from the safety of your desk via networked connections
- **Predictive**
Machine diagnostics for early warning and detection to avoid failure
- **Optimization**
Customizable systems to meet many different application needs
- **Expandable**
Multi-reducer monitoring
- **Reliable**
Schedule machine downtime to avoid lost production
- **Cost-Effective**
Lower overall ownership cost

the **CHECK** 
ENGINE LIGHT for
SPEED REDUCERS

* All DriveSMART® options include: Oil sampling pitot tube, and Oil Breather package that incorporates oil fill and drain ports.

** All CycloSMART® systems are customizable with many different options for data monitoring. Examples are shown.

Learn more at: SumitomoDrive.com/CycloSmart



Our factory capabilities support all of your gearbox needs.

The most reliable and highest quality products backed by a 400 year heritage.

Why Sumitomo?

Our 400 Year Heritage

The history of the Sumitomo Group started more than 400 years ago when Masatomo Sumitomo opened a book and pharmacy store in the city of Kyoto, Japan. Today, the Sumitomo Group consists of more than 20 companies who share the Sumitomo Emblem as well as many common values and ideals.

Devoted to Quality

In addition to one of the most comprehensive product lines of any power transmission company, we offer the most reliable and highest quality products available in the industry. Whether it's product development or manufacturing processes, our Quality culture resonates through our entire global network.

Committed to our Employees and the Community

We recognize our employees are our most valuable asset. They are the driving force behind our innovative products, our ability to support our customers, and our commitment to continuous process improvement. We strive to be a valuable member of society and take pride in the contributions we make to our communities across North and South America.

Dedicated to Innovative Manufacturing

With more than a century of expertise in manufacturing, our global capabilities are unmatched in the industry. We have manufacturing and assembly facilities on every continent and continue to make investments in our manufacturing technologies to maintain our position as a leader in innovation.

Centers of Excellence

Our Centers of Excellence offer customers a nationwide support network. From inventory distribution to manufacturing to assembly, we have the team to ensure high quality, responsiveness, on-time delivery, and quick lead times.



Chesapeake, VA

Manufacturing, Support, Inventory, and Training

Our Western Hemisphere headquarters has 250,000 sq ft of manufacturing space, and cutting-edge technology. Centralized inventory distribution with a Foreign trade zone (FTZ), focused on inventory optimization, motor assembly, and hands-on training at our Power Institute.



Verona, VA

Industrial Gearbox Production

This purpose-built facility is specifically designed to handle the assembly of our large industrial gearboxes.



Glendale Heights, IL

Gearmotor Assembly and Support

Houses our state-of-the-art paint system for our SHIELD360® packages for Cyclo®, BuddyBox®, and Hyponic®.



Lufkin, TX

Manufacturing and Services

This 32,000 sq ft facility handles gear manufacturing, gearbox repairs, and reverse engineering.



Corona, CA

Gearmotor Assembly and Support

Our West Coast location offers repairs and supplies gearmotor products to U.S. customers.