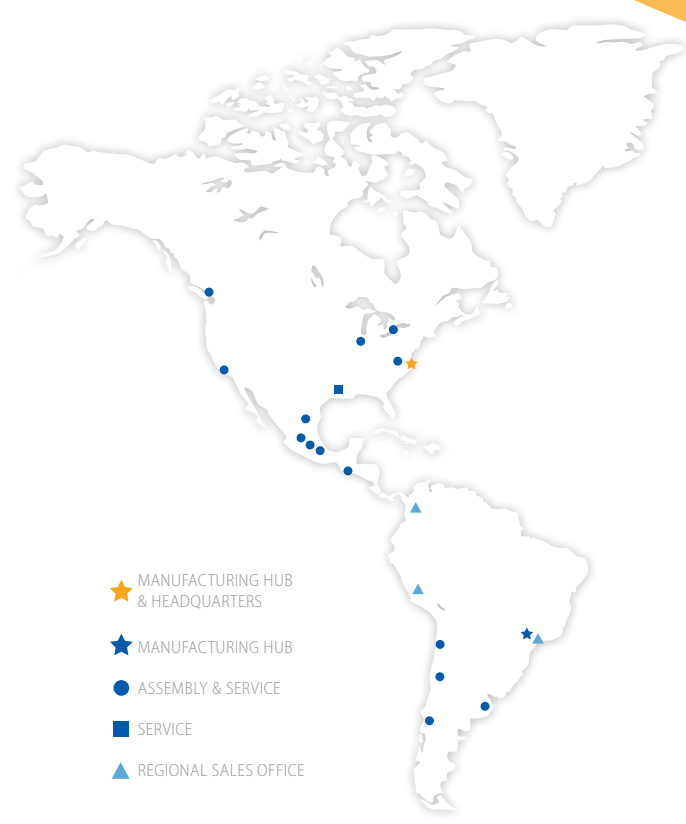




Sumitomo Drive Technologies

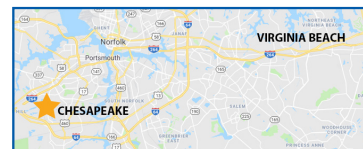


- ★ MANUFACTURING HUB & HEADQUARTERS
- ★ MANUFACTURING HUB
- ASSEMBLY & SERVICE
- SERVICE
- ▲ REGIONAL SALES OFFICE

Sumitomo Drive Technologies

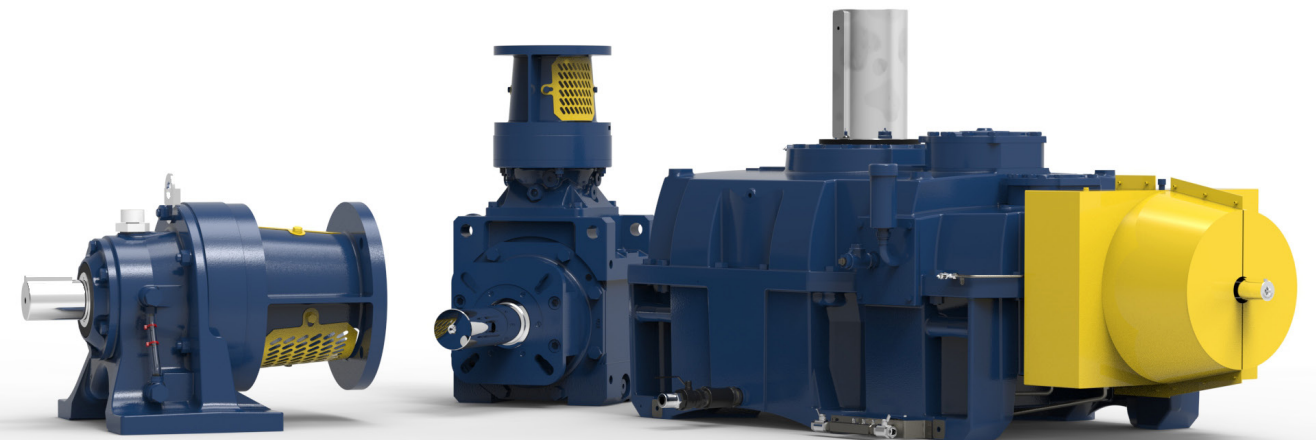
A global power transmission solutions provider. With facilities strategically located throughout the world, providing comprehensive products and services in your region.

Headquarters



4200 Holland Blvd
Chesapeake, VA 23323

email: SMA.CustomerService@shi-g.com
phone: 757-485-3355



Why choose Sumitomo Drive Technologies for Grain applications?

We offer the toughest drives available to meet the harshest demands.

We Know Grain

The grain industry is a widely diverse industry with facilities ranging from small country elevators that may run a few hours a week to extensive, continuous production facilities consuming hundreds of thousands of bushels a day. Likewise, the products produced are enormous, ranging from food ingredients and animal feeds to fuel.



Cyclo® Technology

Cycloidal “gearless” speed reduction components operate in compression, not shear.

- High ratios in a small space envelope.
- 500% momentary shock load capacity.
- Universal mounting arrangements.

Taper-Grip® Bushing

A simple shaft-mounting device that provides self-aligning, backlash-free torque transmission.

- Easy unit mounting and removal.
- Resistance to fretting and corrosion.
- Multiple stock bore sizes for quick delivery.

Screw Conveyor Drives

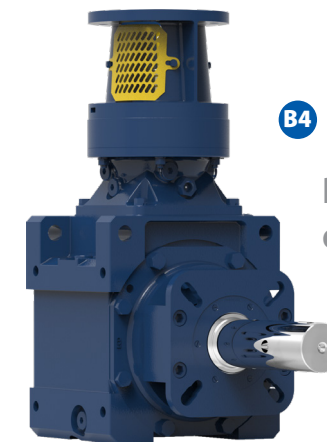
We offer unique solutions to withstand a variety of harsh conditions with optimal performance.

- CEMA standard screw conveyor options.
- High torque density and compact size.
- Drop-In replacement for all AGMA style units.

Hansen Desolventizer Toaster Drives

The DT Drive is an application adapted design, carefully upgraded to meet the rigorous demands.

- Robust thrust bearing arrangement.
- Housing machined for additional high thrust support.
- Lubrication maintenance and monitoring design considerations.



B4 CYCLO® BBB4 Screw Conveyor Drive

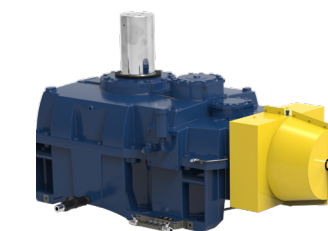
Right-angle, rugged ductile iron housing option allows for maximum mounting flexibility.

- Available maintenance-free options
- No V-belt drives or associate guards to replace
- Double output seals for a virtually leak-free operation



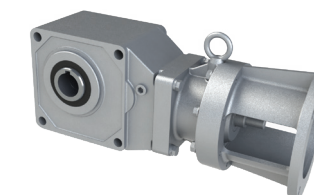
C CYCLO® 6000

- Cycloidal Technology
- Optimal Efficiency
- Maintenance-Free



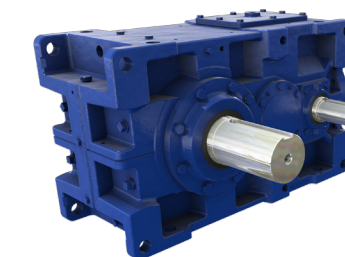
DT HANSEN DT Drive

- Dedicated Vertical Housing
- Low-Noise Gearing
- High Thrust Bearing Arrangement



H HYPONIC®

- 85% Efficiency
- Maintenance-Free
- Large Ratio Range



PX PARAMAX® 9000

- AGMA Class 11+ Gearing
- Power Dense
- Integral Backstops



HB CYCLO® HBB

- Cycloidal Technology
- No Thermal Limits
- Taper-Grip® Bushing



HS HELICAL Shaft Mount

- Taper-Grip® Bushing
- Compact Design
- CEMA SCD available

We meet the challenges that the grain industry faces every day.

Sumitomo has the reliable solutions to meet any demand.

The Challenge: Variation

Each type of facility and grain has unique operational, dimensional, and power requirements and various grain handling systems. The net result is a very disparate population of gear reducers throughout the industry. Given this dissimilar mix of products, it is challenging to find one provider that can serve all the power transmission needs of the grain industry.

Inefficiency / Outdated Equipment Problems:

- Low efficiency
- Oil leakage
- Difficult to obtain parts / spare units
- Oversized products
- Frequent maintenance and repairs
- Complex power trains
- Hard to manage support from multiple providers
- Limited mounting options available

The Solution: One Provider

We manufacture a comprehensive lineup of speed reducers and gearmotors specifically designed to meet the needs of service in the grain industry. With more than 50 years of experience, Sumitomo Drive Technologies is a complete modern solution providing highly efficient, dependable solutions for the most difficult applications.

Sumitomo Problem Solvers:

- Dedicated vertical drives with Hansen P4 product
- Maintenance-free options available
- Readily available modular design concepts throughout product range
- Compact, space-saving, and energy efficient designs
- Elimination of sheaves, belts, bushings, and guards
- Quiet, power-dense units with wide ratio availability
- Comprehensive support for all of our products
- Maximum mounting flexibility
- Retro-fit, Drop-In, and Custom options



Storage & Conveying



C H B4 HB HS PX

Cleaning



C H B4 HB HS

Flaking



C B4 HB HS

Pulverizing



C PX

Toasting



DT

Squeezing



C PX

Extruding



PX

Cooling



C H B4 HB HS PX

From transition bases to custom units,
we'll have you back up and running.

Avoid catastrophic failure, minimize risk
and increase machine uptime.

Retro-Fits and Drop-Ins

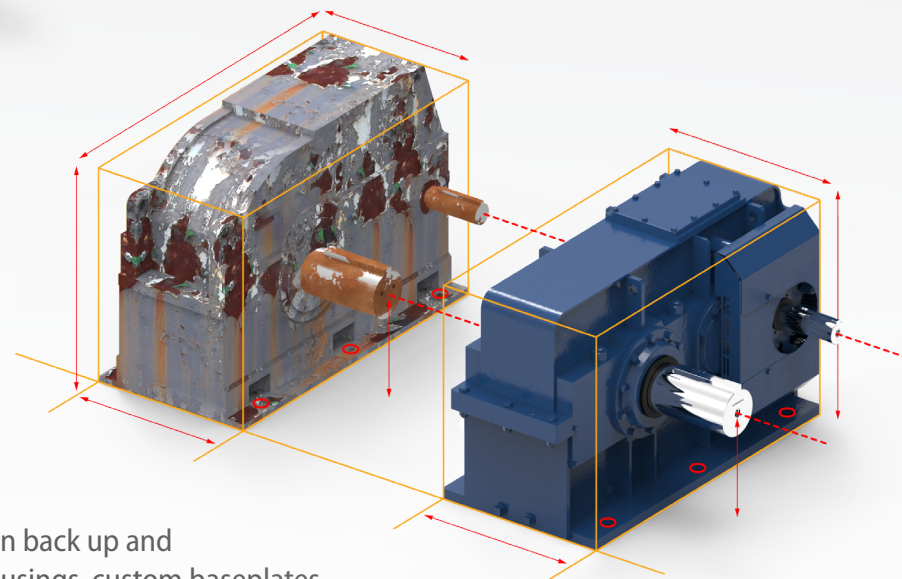
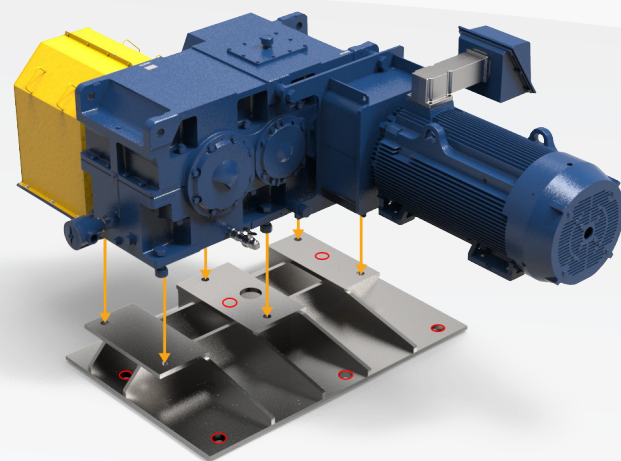
Retro-Fit

Match existing footprint

A custom transition base will position the new low-speed shaft to be in the EXACT same position as the original low-speed shaft. Our retrofits provide an excellent balance between the cost savings of a standard gearbox and the benefits of minimal on-site modifications.

Typically, only relocating the motor mount is required for this option.

Options might include a special low-speed shaft diameter or length and motor lantern.



Drop-In

Match existing unit's critical dimensions

With downtime being such a critical factor in your operation, let us install one of our custom drop-in units.

Installation-ready units are designed specifically to drop-into existing applications with ease.

These stress-free units can have your application back up and running in no time. We offer fabricated steel housings, custom baseplates, custom gearing and shafting and more!

This product will literally drop-in to place; same footprint, same shaft positions!

System Management And Reliability Technology (SMART)

SMART is a range of products and reducer options that were developed to help end users in their reliability and asset management initiatives within their plants daily operations.



Condition Monitoring

Fully customizable accurate real time condition data of any piece of rotating equipment.



Reliability Monitoring

Aids consistent collection of data. For Vibration analysis, oil condition and cleanliness testing.*

- **SAFE**
Monitor assets from the safety of your desk via networked connections.
- **PREDICTIVE**
Machine diagnostics for early warning and detection to avoid failure.
- **RELIABLE**
Schedule machine downtime to avoid lost production.
- **EXPANDABLE**
Multi-reducer monitoring.

- **OPTIMIZATION**
Customizable systems to meet many different application needs.
- **COST-EFFECTIVE**
Lower overall ownership cost.

* All DriveSMART® options include: Hydroscopic breather with 3mm filter, drain/fill connection for on-line filtration, and oil sample pitot tube port.

SumitomoDrive.com/CycloSmart



OPTIDRIVE E3

GENERAL PURPOSE DRIVE

Compact, robust, and reliable general purpose drive.

Focused on ease of use, Optidrive E3 provides **unrivalled simplicity** of installation, connection, and commissioning, allowing the user to benefit from **precise motor control** and **energy savings** within minutes.

Available in **IP66/Nema 4X outdoor rating** with tough polycarbonate plastics specifically chosen to **withstand degradation** by ultraviolet (UV), greases, oils, and acids. Also, robust enough not to be brittle at -20°C (-4°F).


 Compliant with international standards.



ENCLOSURES

- 150% Overload for 60 secs
- 175% Overload for 2.5 secs
- 98% Typical Efficiency

FAST CONNECTION

5mm rising clamp terminals with captive screws.

KEYHOLE MOUNTS

QUICK REFERENCE

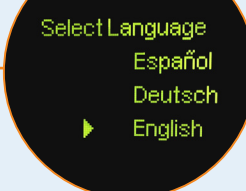
Integrated help card.

OPTISTICK SMART

Rapid Commissioning Tool that allows copying, backup, and the restoring of drive parameters.



DUAL ANALOG INPUTS



INTEGRATED DISPLAY

LED or multi-language text display.

INTEGRATED CABLE MANAGEMENT

PLUGGABLE CONTROL TERMINALS

FANS

High quality long-life fans.

OPTIDRIVE P2

HIGH PERFORMANCE DRIVE

High-performance **variable frequency drive** for standard induction and permanent magnet motors.

A **user-friendly interface** and high performance make it perfect for tackling the most demanding applications smoothly.

Extensive I/O and communications **interface capabilities** ensure the drive can be **integrated quickly and efficiently** into a wide variety of control systems.

Dedicated Hoist Mode Operation with motor holding brake control make it perfect for marine and elevator applications.

SPECS



HP RATING
Up to 350 HP
(250 kW)



POWER OPTIONS
Single-Phase: 200-240V
3-Phase: 200-600V



TORQUE
Up to 200%
(From Zero Speed)

- 200% Overload for 4 secs

- 98% Typical Efficiency

- Integral Brake Transistor

Our factory capabilities support all of your gearbox needs.



Aftermarket

Our personnel are the industry's most versed gearbox problem solvers. We provide both standard and tailored services, for maximum gearbox life.

Experts in Service

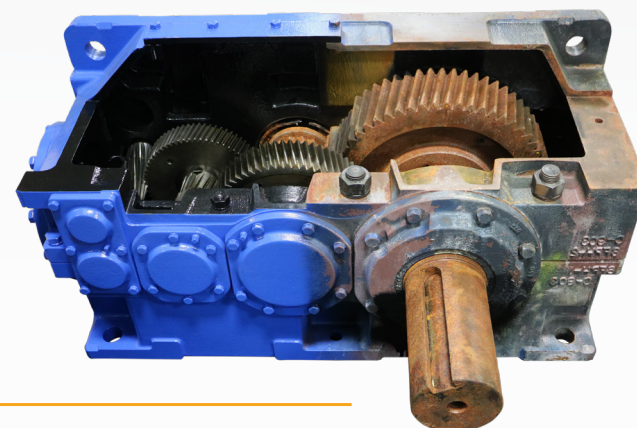
Global Support, Local Service



With a vast network of engineers and gearing experts, there is no problem we can't handle.

In addition to our extensive network, LUFTEX Gears Manufacturing and Services provides unmatched capabilities and expertise in the area of custom gearbox repair and service. With a 60-ton crane capacity and 41 ft hook height, no gearbox is too big for us to handle.

Whether custom gear manufacturing or on-site gearbox repair, let our team at LUFTEX keep your operation running.



Centers of Excellence

Our Centers of Excellence offer customers a nationwide support network. From inventory distribution to manufacturing to assembly, we have the team to ensure high quality, responsiveness, on-time delivery, and quick lead times.

Repairs

Scheduled & Emergency Repair

Repair services for all your related gearbox needs and 24-72 hour turnaround to the original factory specifications and warranty using Sumitomo-manufactured parts.

Extended warranty programs are available upon request.

Root Cause Investigation

Product Support

Apply a wide range of approaches, tools and techniques to uncover the causes of your problems.

Field Services

For Your Convenience

Most of the services offered and customized training can be performed on location.

Chesapeake, VA



Manufacturing, Support, Inventory, and Training

Our Western Hemisphere headquarters has 250,000 sq ft of manufacturing space, and cutting-edge technology. Centralized inventory distribution with a Foreign trade zone (FTZ), focused on inventory optimization, motor assembly, and hands-on training at our Power Institute.



Verona, VA



Industrial Gearbox Production

This purpose-built facility is specifically designed to handle the assembly of our large industrial gearboxes.



Glendale Heights, IL



Gearmotor Assembly and Support

Houses our state-of-the-art paint system for our SHIELD360® packages for Cyclo®, BuddyBox®, and Hyponic®.



Lufkin, TX



Manufacturing and Services

This 32,000 sq ft facility handles gear manufacturing, gearbox repairs, and reverse engineering.



Corona, CA



Gearmotor Assembly and Support

Our West Coast location offers repairs and supplies gearmotor products to U.S. customers.

